

PLAN LOCAL D'URBANISME

Modification n°1

Piece n°1 bis annexe : zonage – extraits avant/après

DOSSIER D'APPROBATION

Conseil Municipal du 02/06/2022

Vu pour être annexé à la délibération du conseil municipal du 02/06/2022



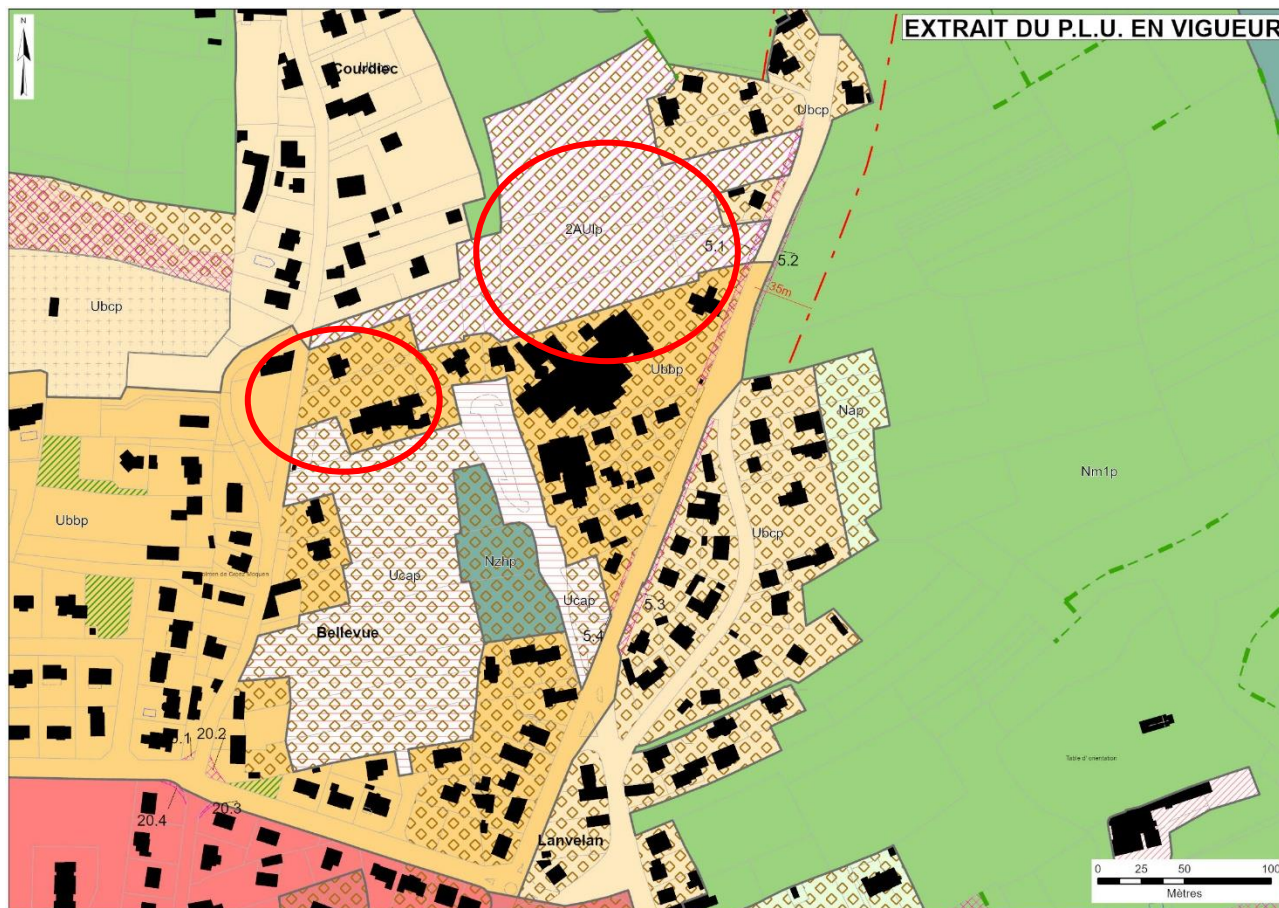
Le Maire,

Olivier LEPICK

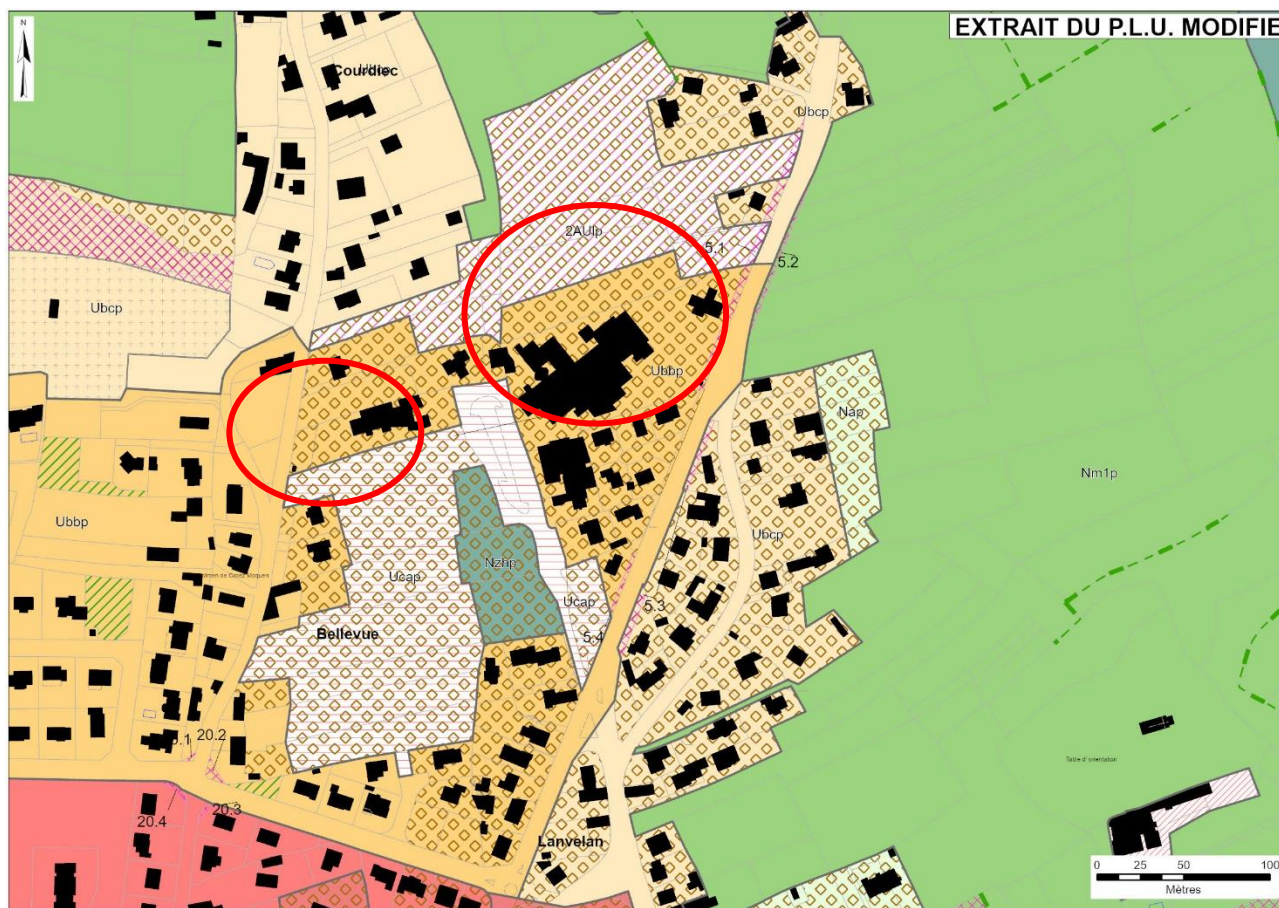
GHECO Urbanistes

COLLEGE DES KORRIGANS - CRECHE RUE DE COURDIEC

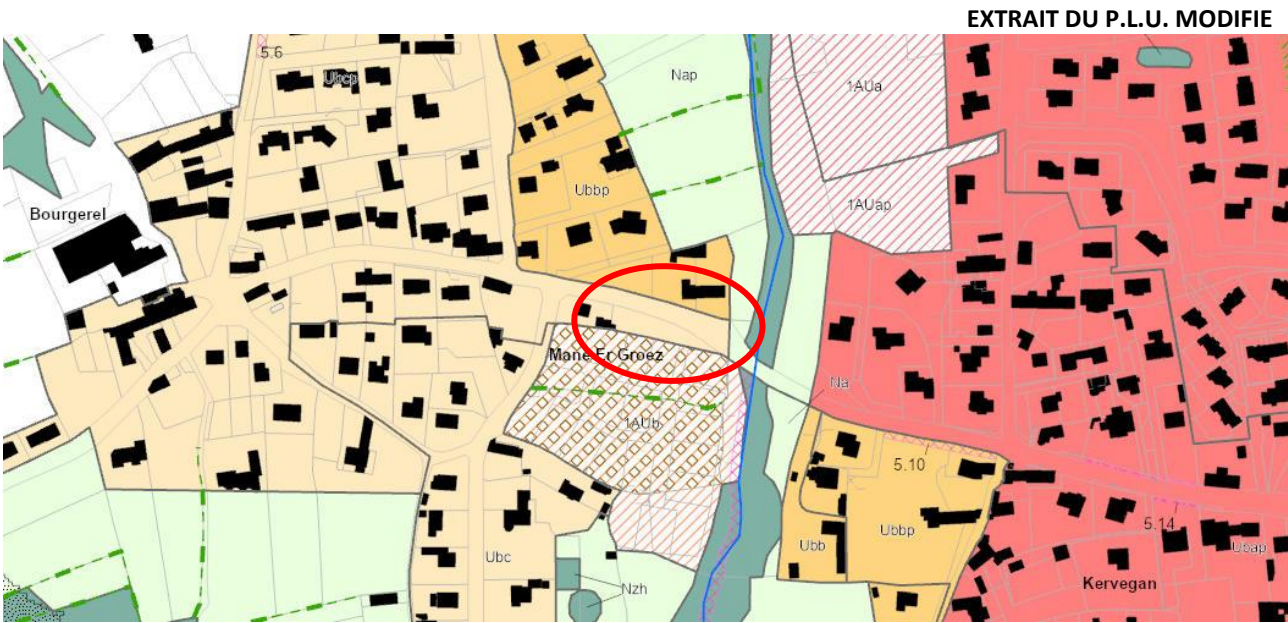
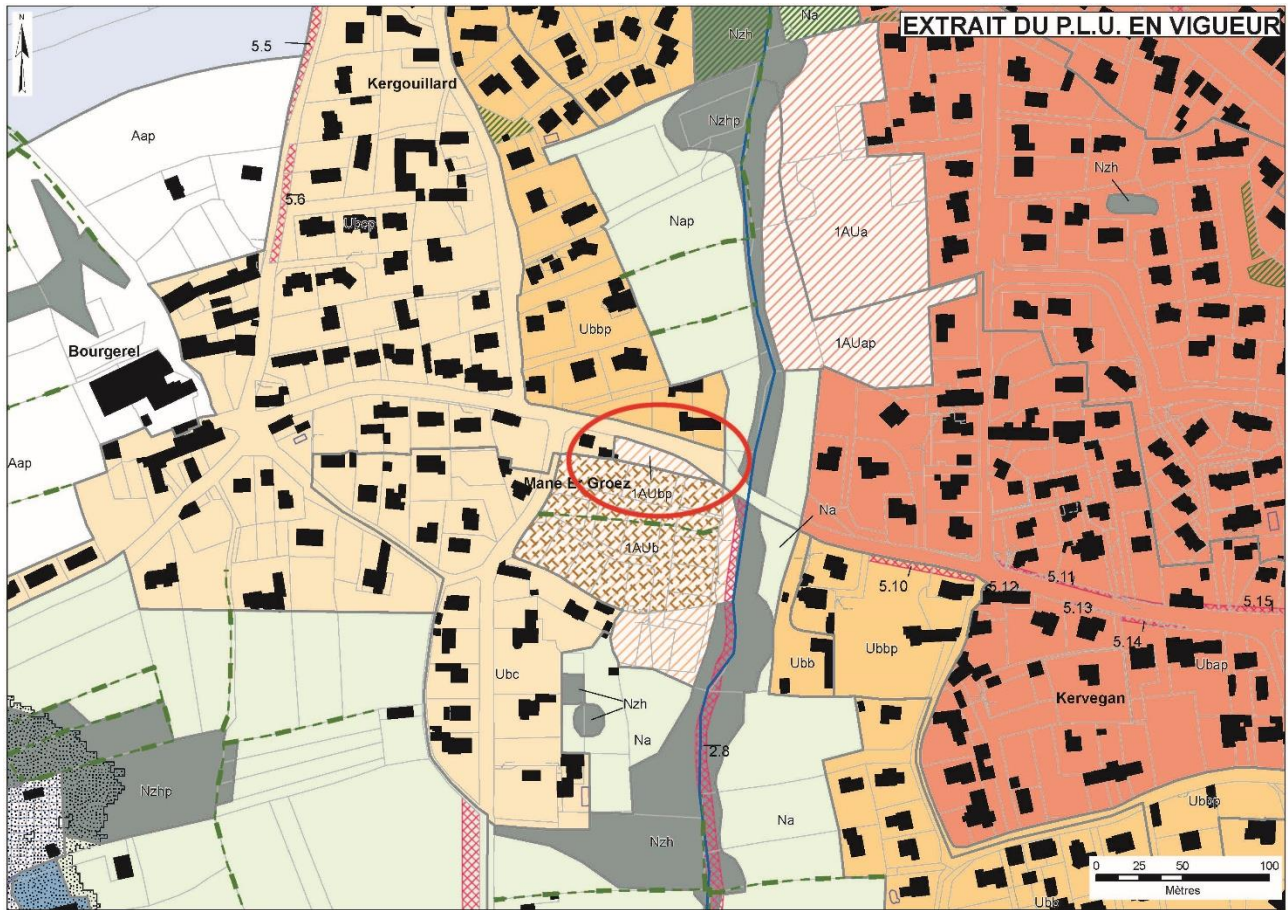
EXTRAIT DU P.L.U. EN VIGUEUR



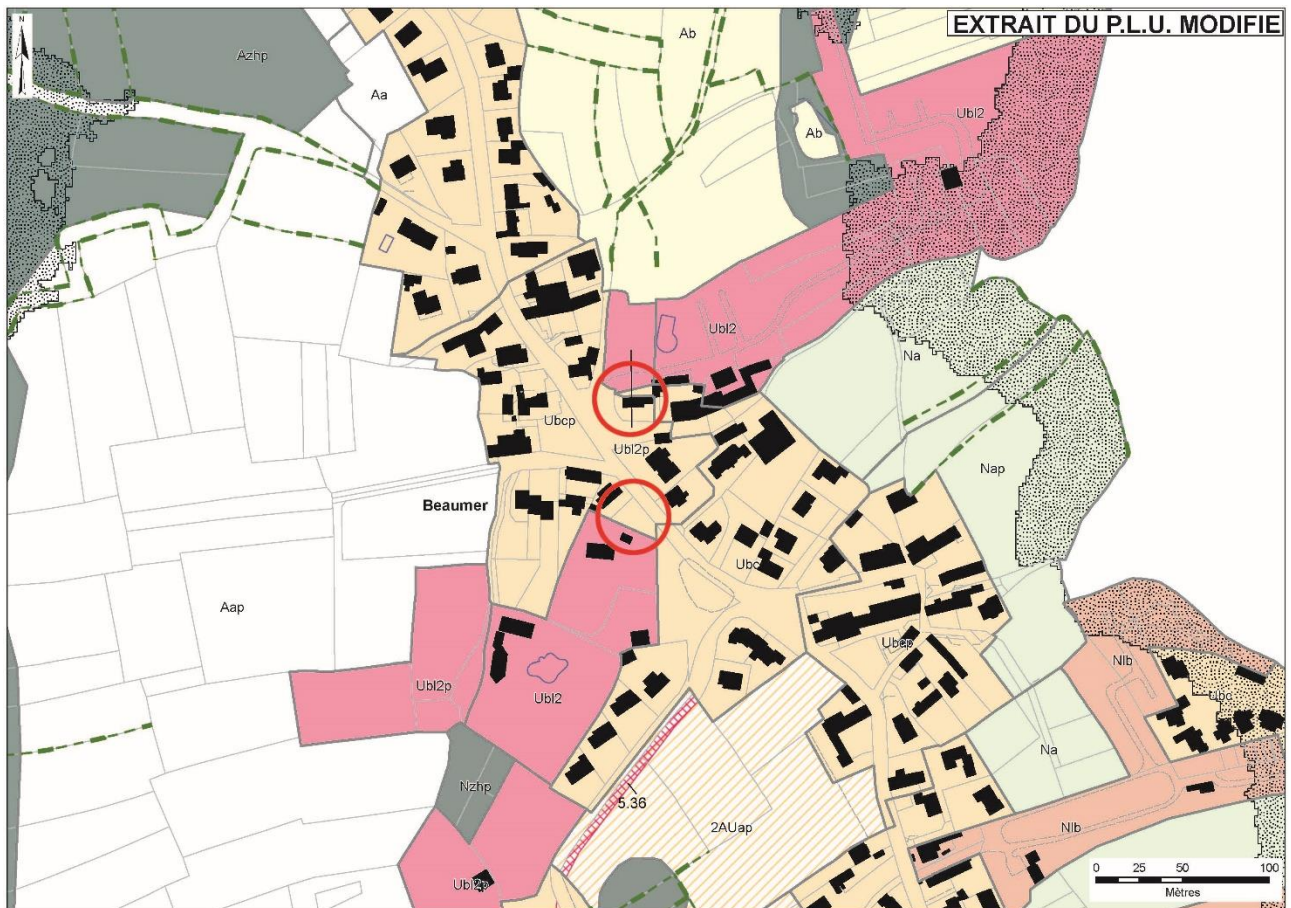
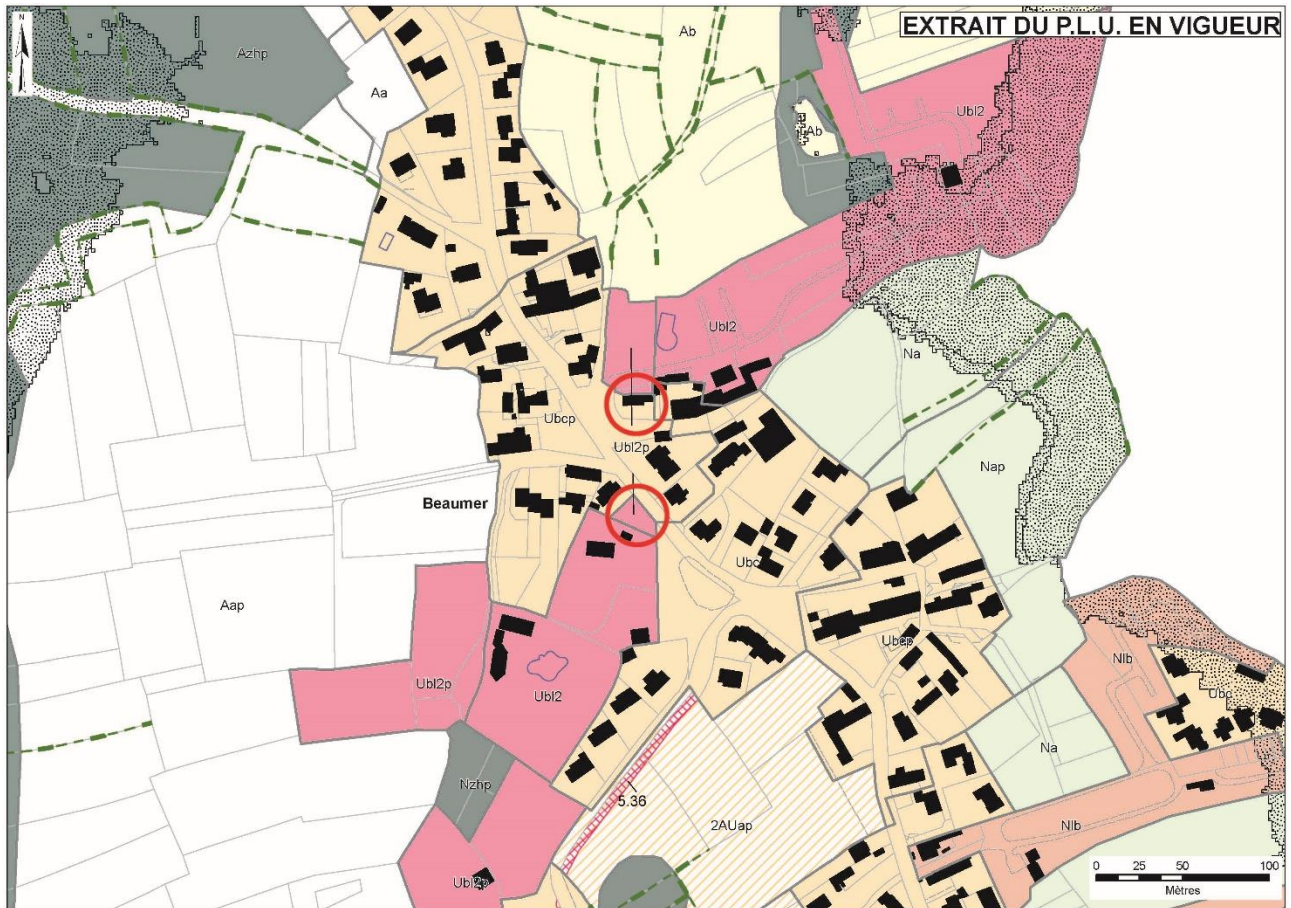
EXTRAIT DU P.L.U. MODIFIE



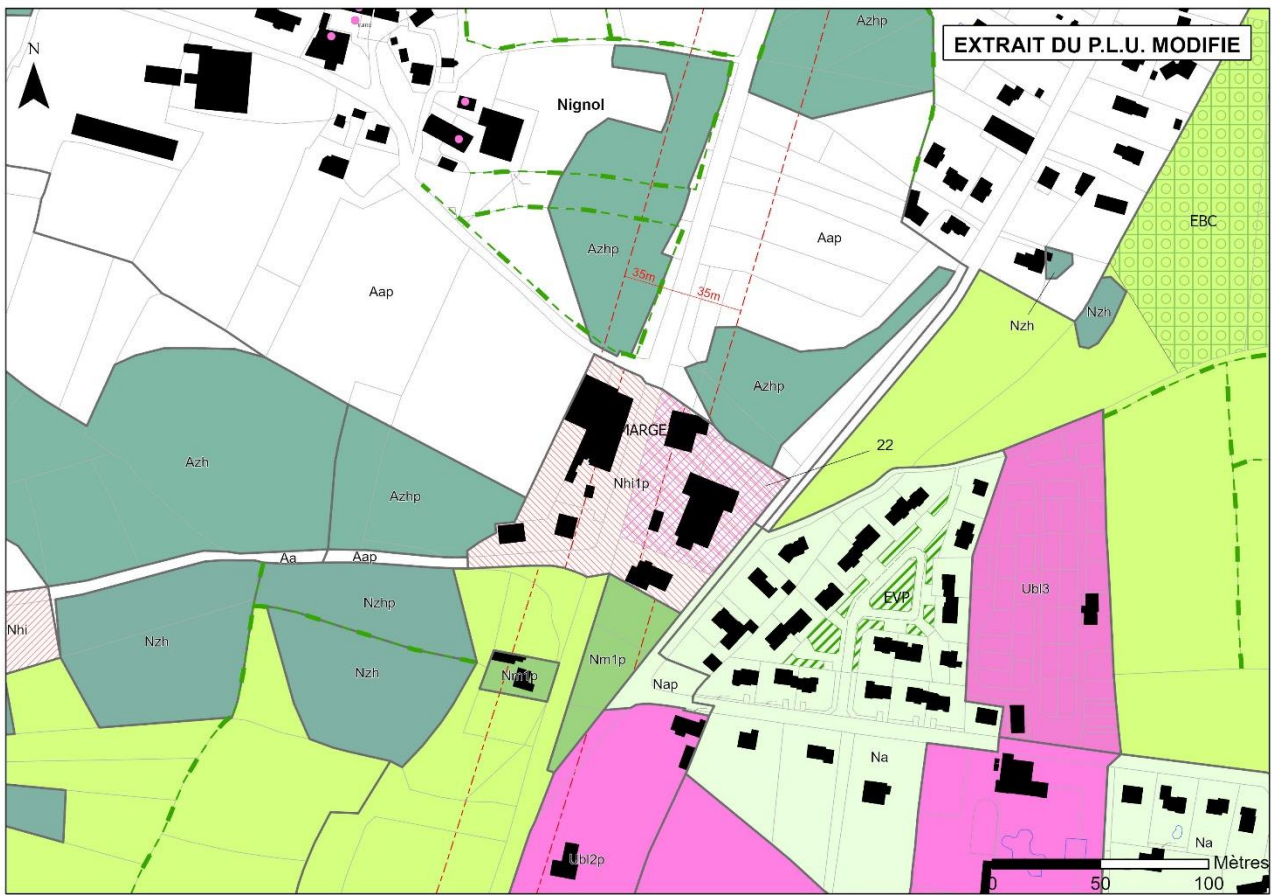
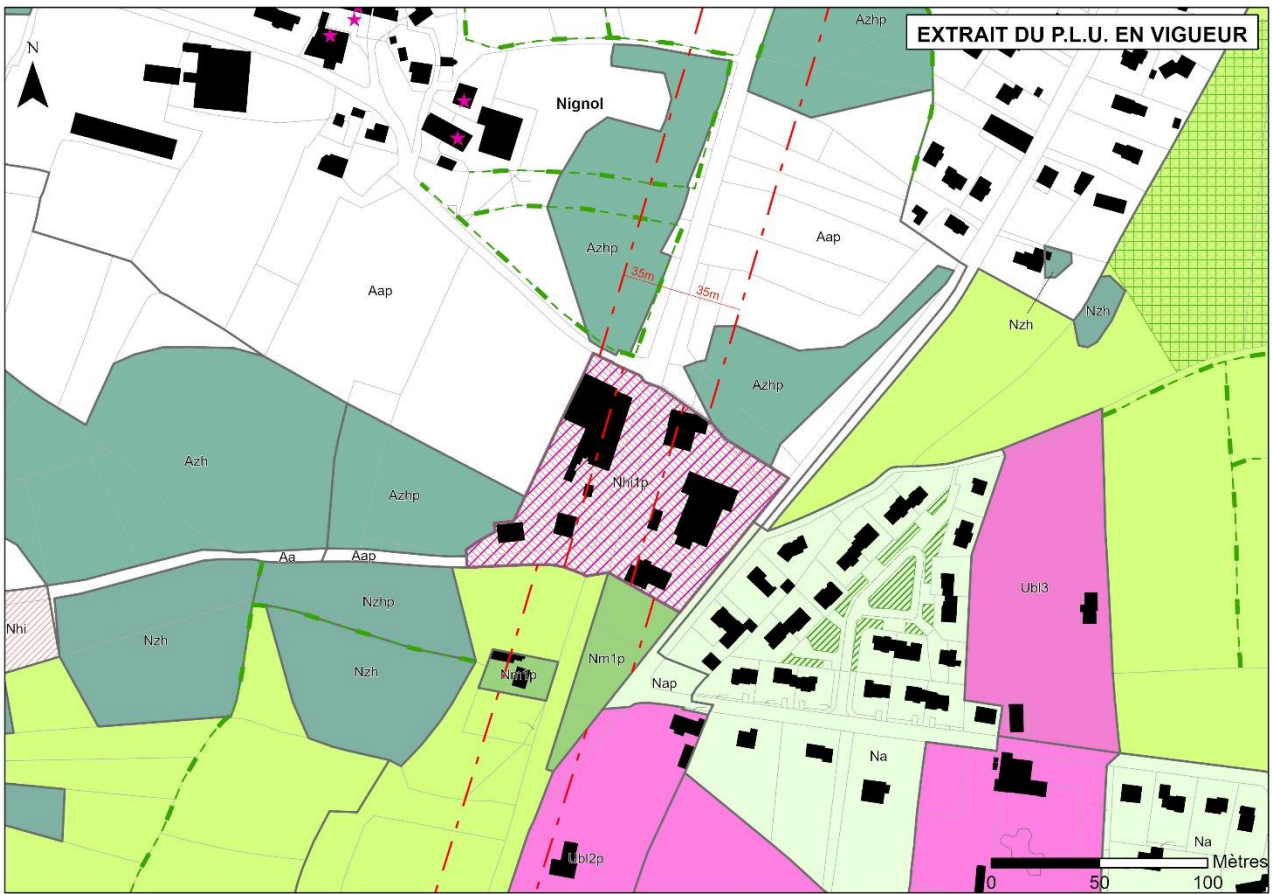
OAP N°6



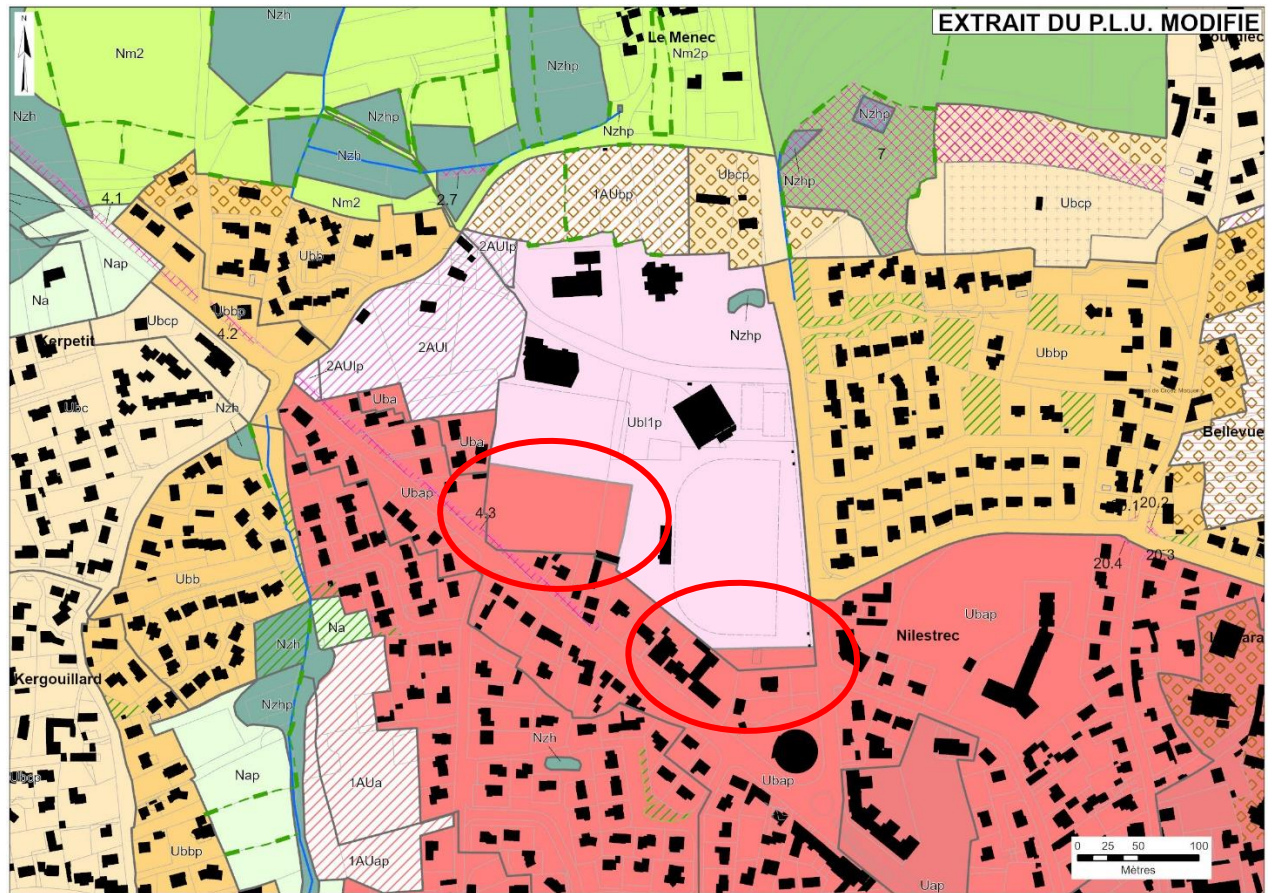
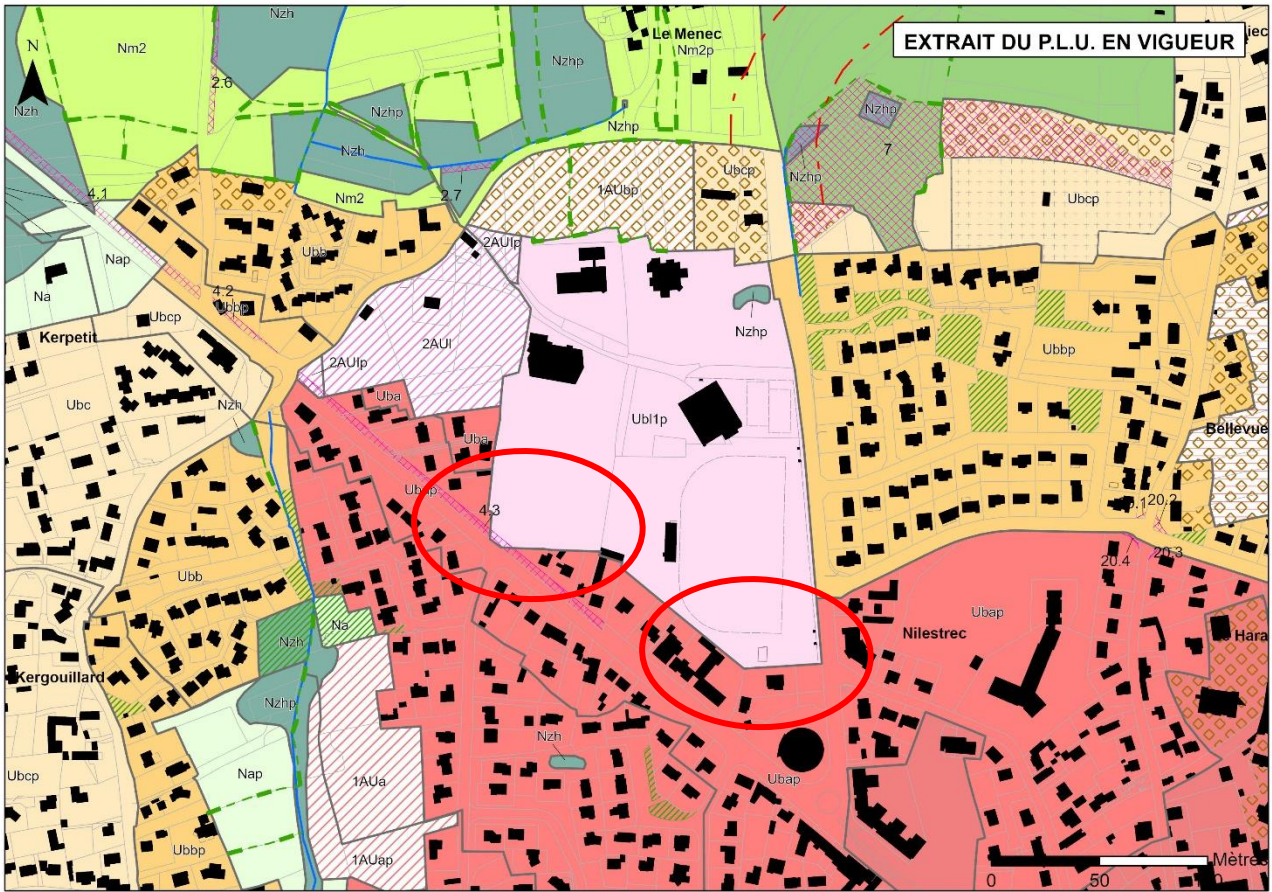
CAMPINGS DES DRUIDES ET DU DOLMEN



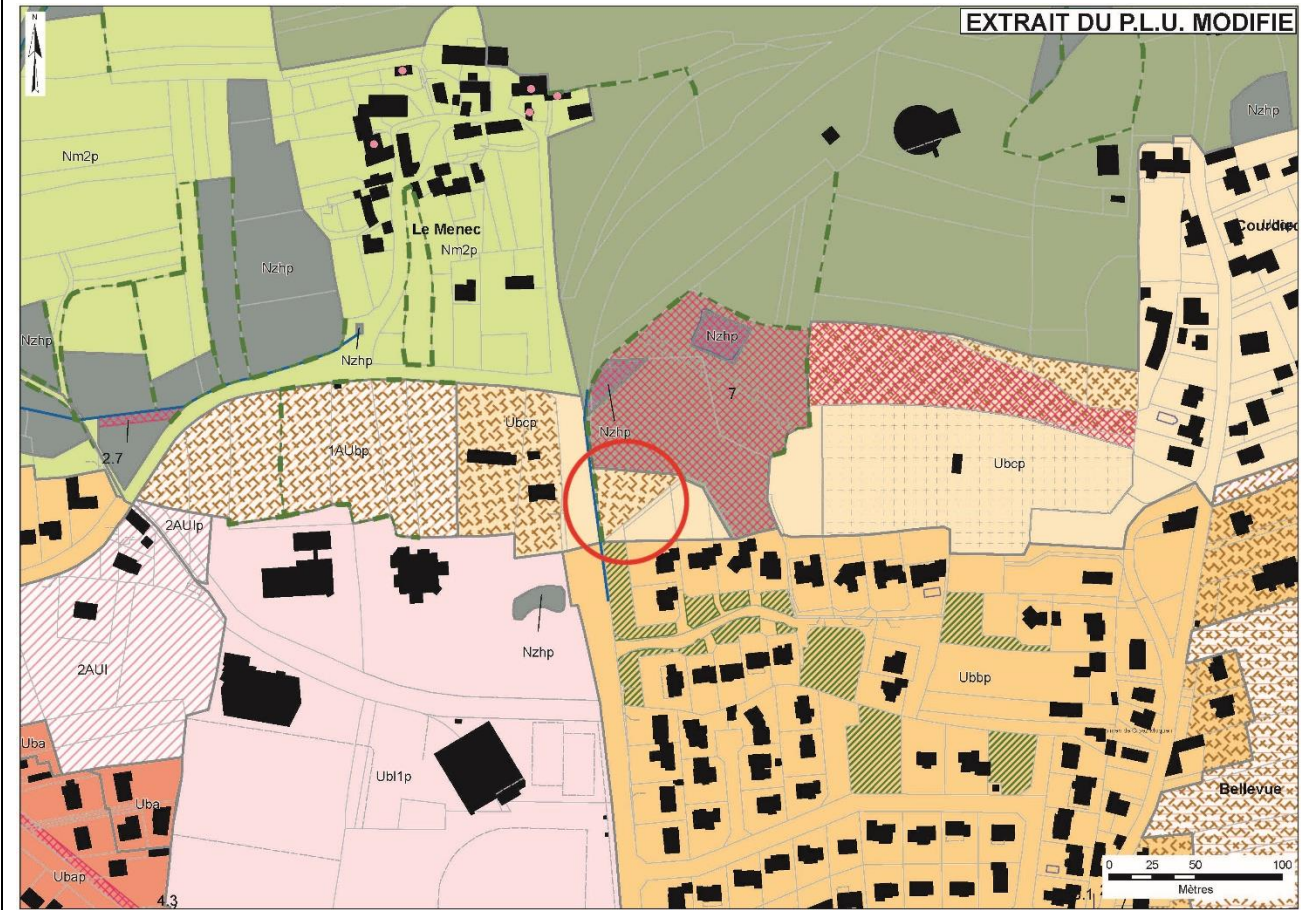
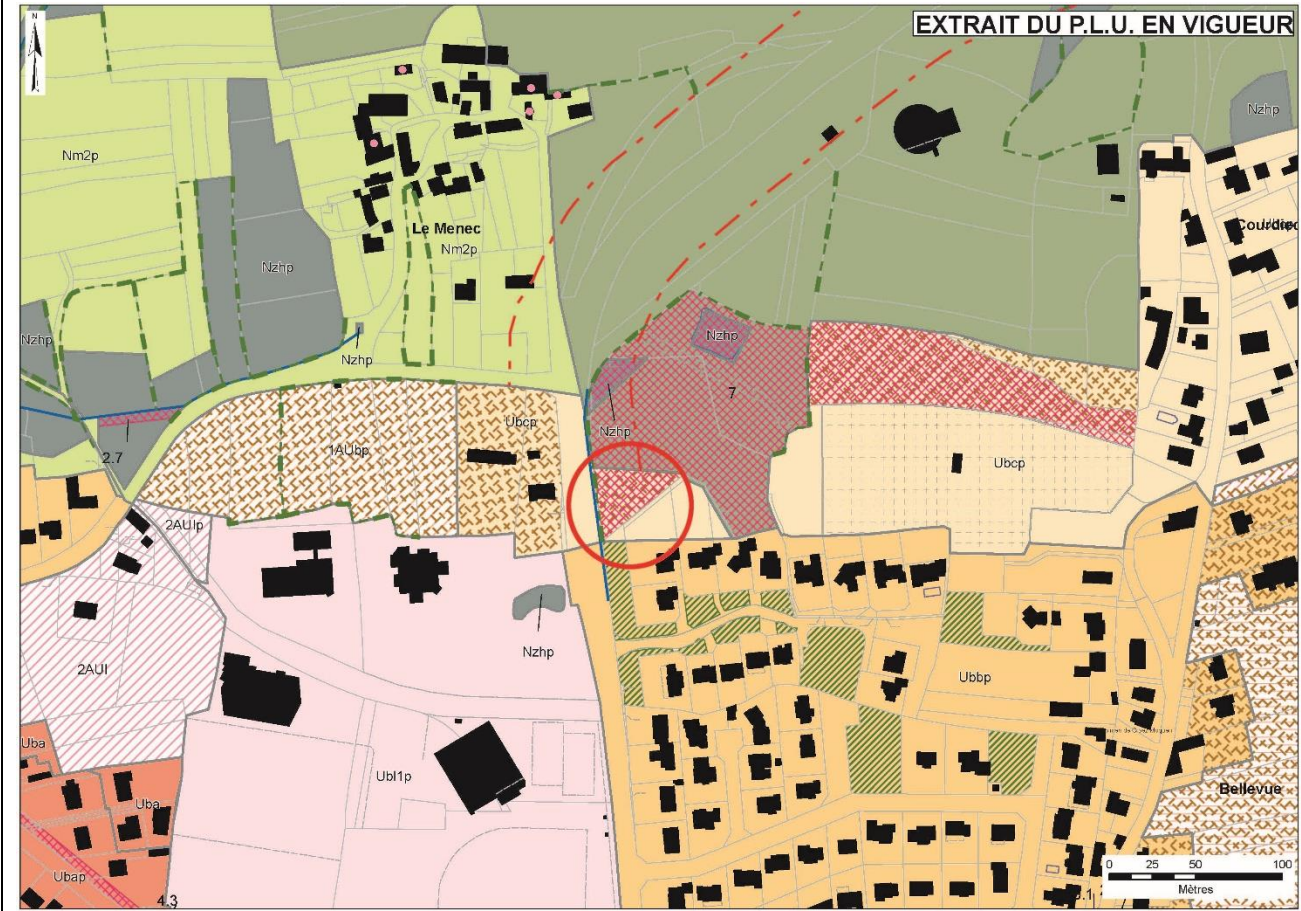
LE NIGNOL – ZONE DE GEL ET ER



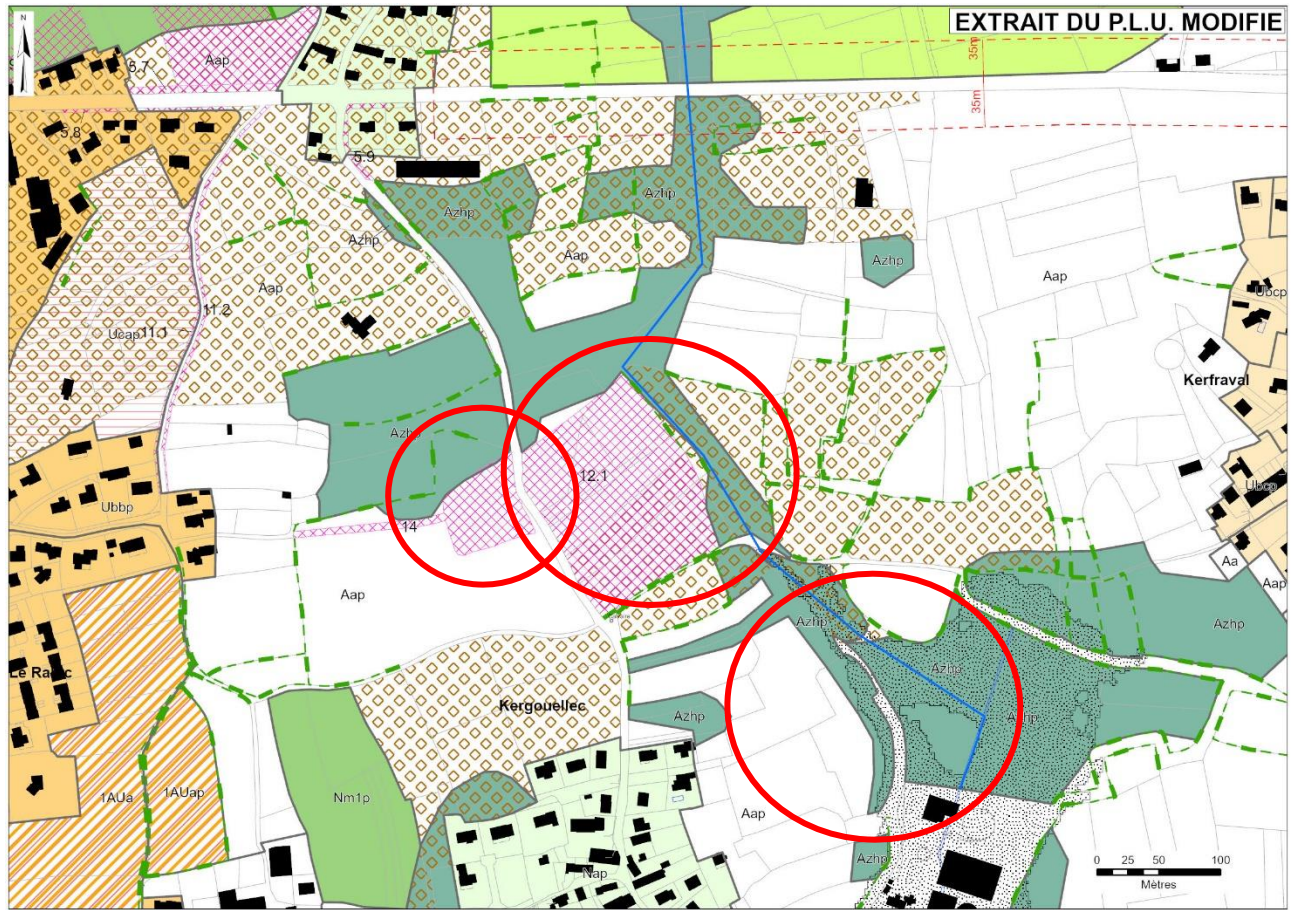
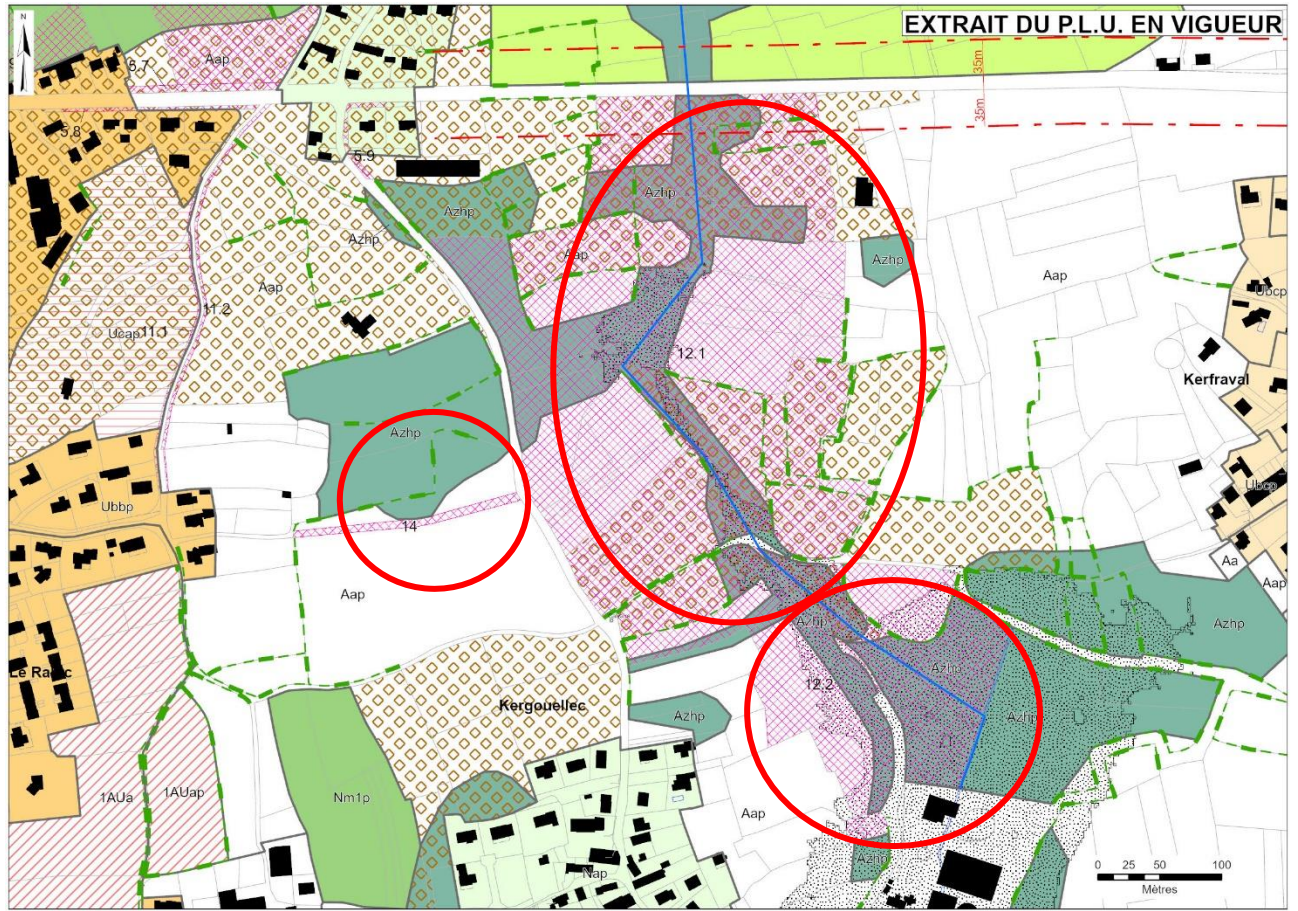
NORD DU BOURG – NORD RUE ST CORNELY – ZONAGES Ubap et Ubl1p



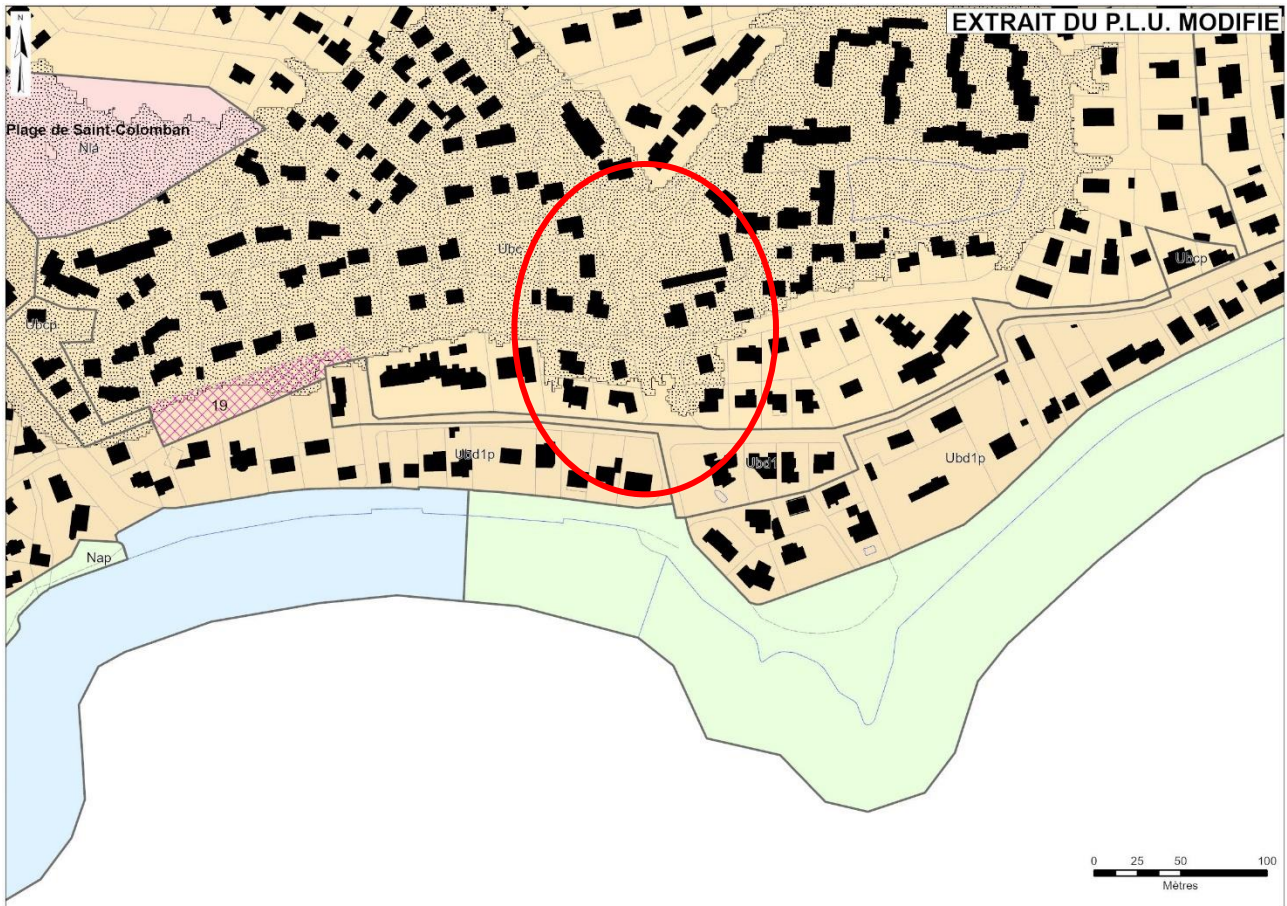
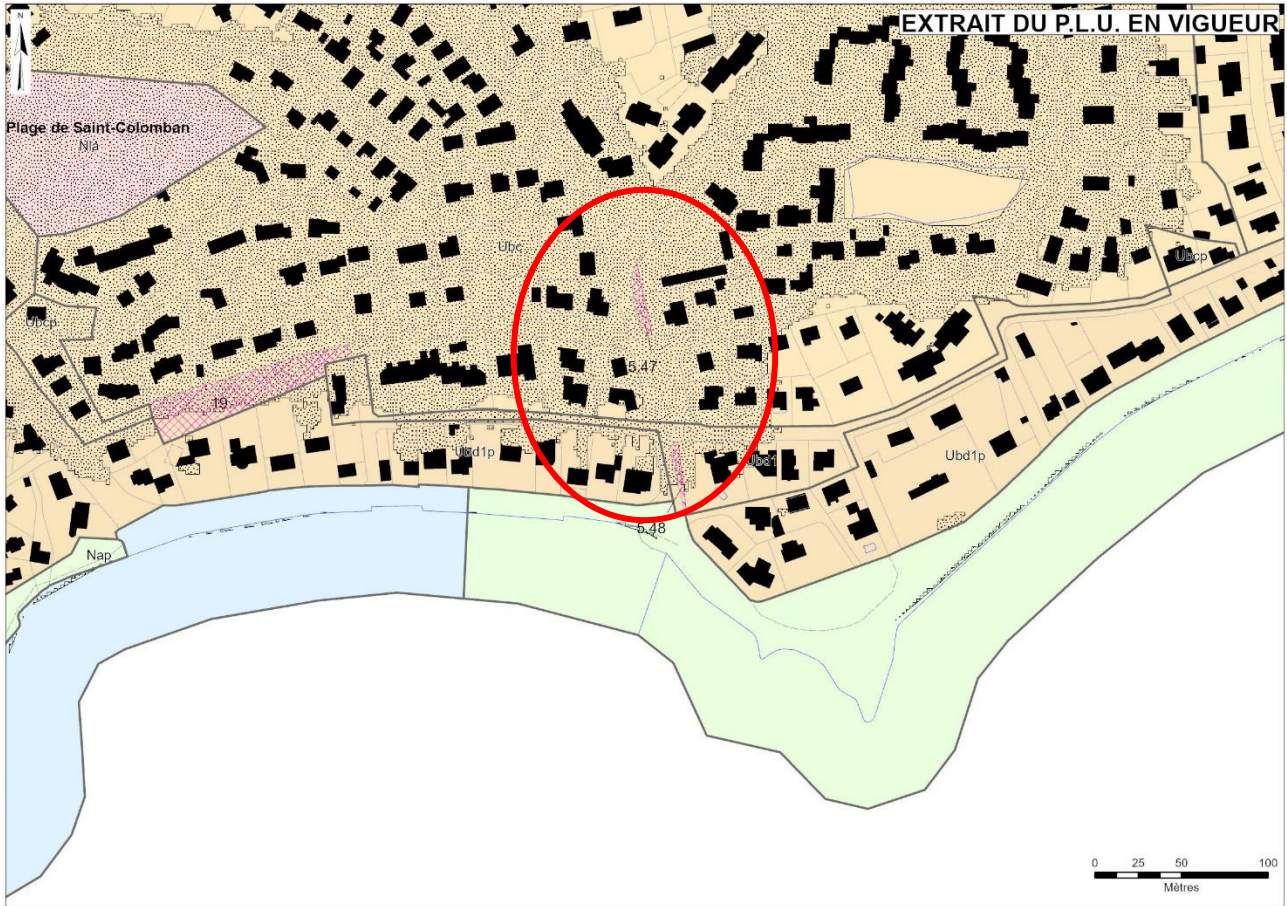
ER 7 PARKING CIMETIERE



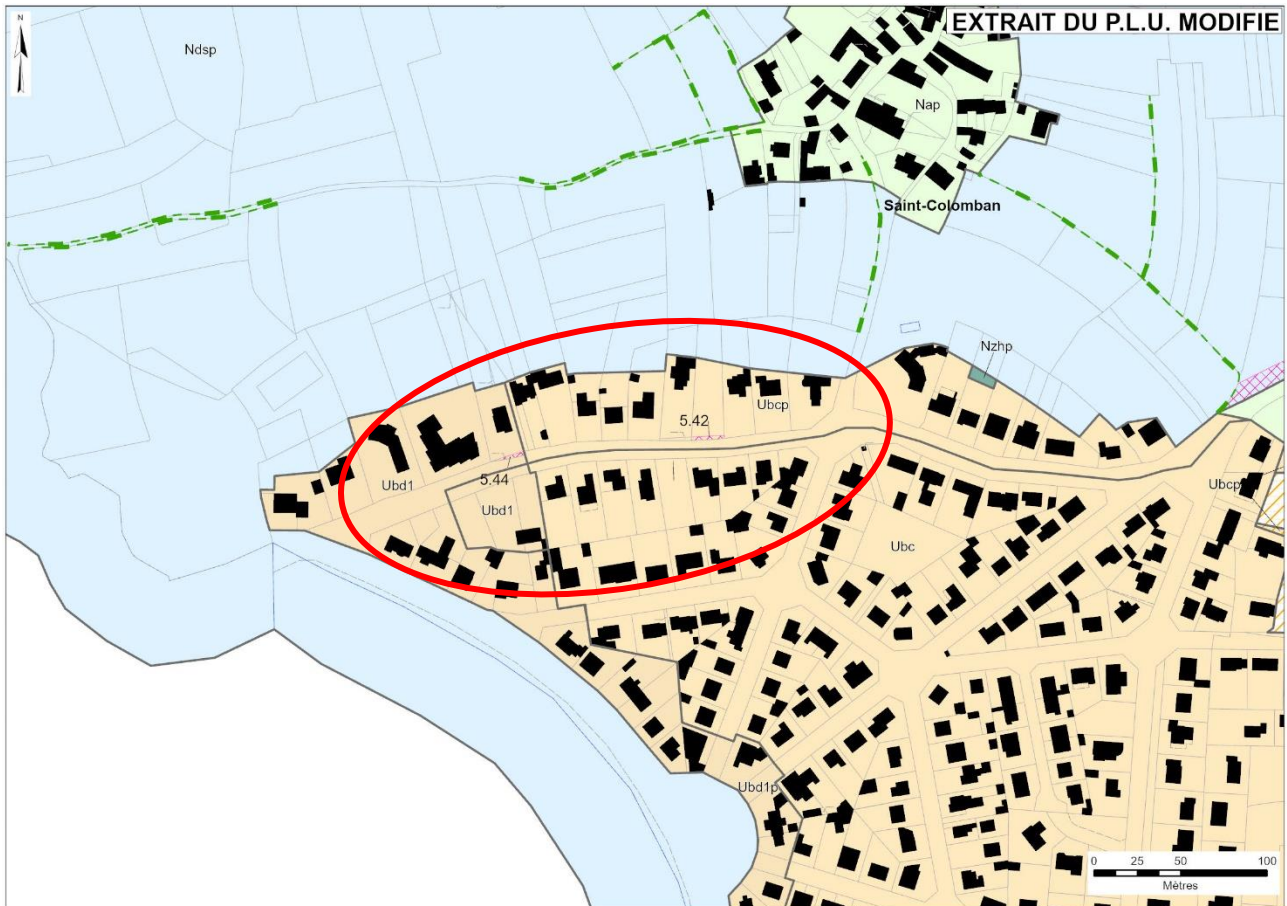
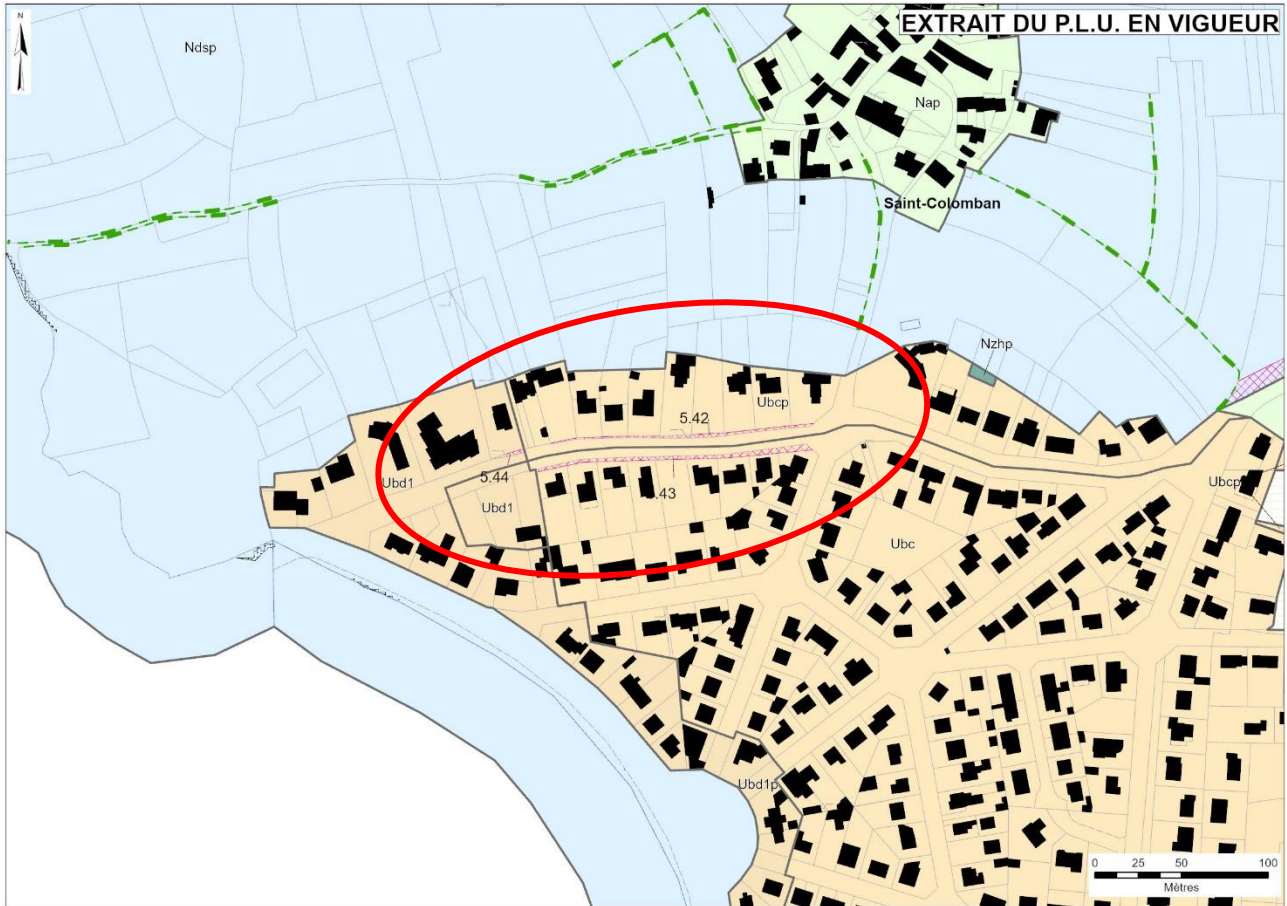
BASSINS DE GESTION EAUX PLUVIALES - ER 12.1 – 12.2 – 14



AVENUE DES DUNES – ALIGNEMENTS

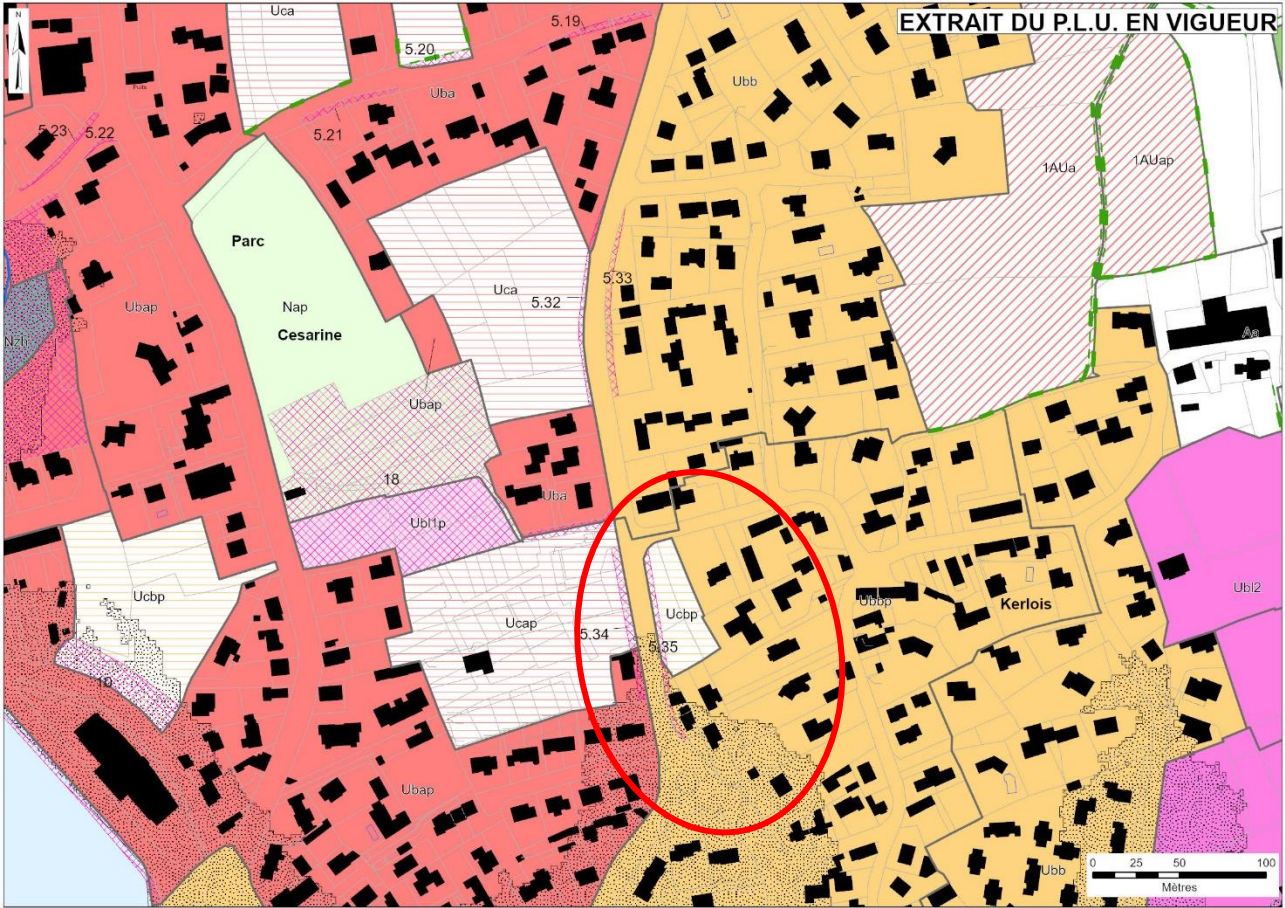


AVENUE DES GREVES – ALIGNEMENTS

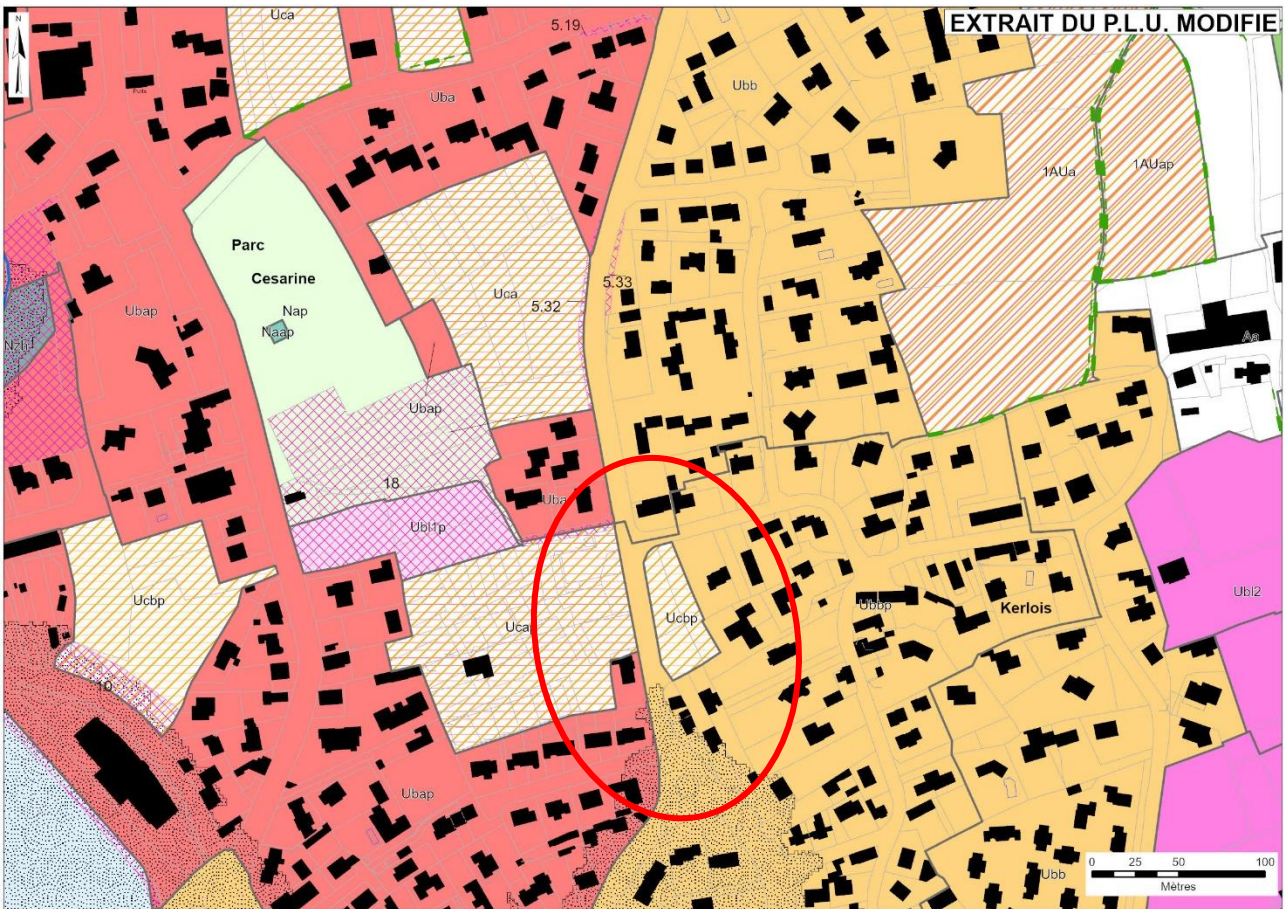


AVENUE RAHIC - ALIGNEMENTS

EXTRAIT DU P.L.U. EN VIGUEUR

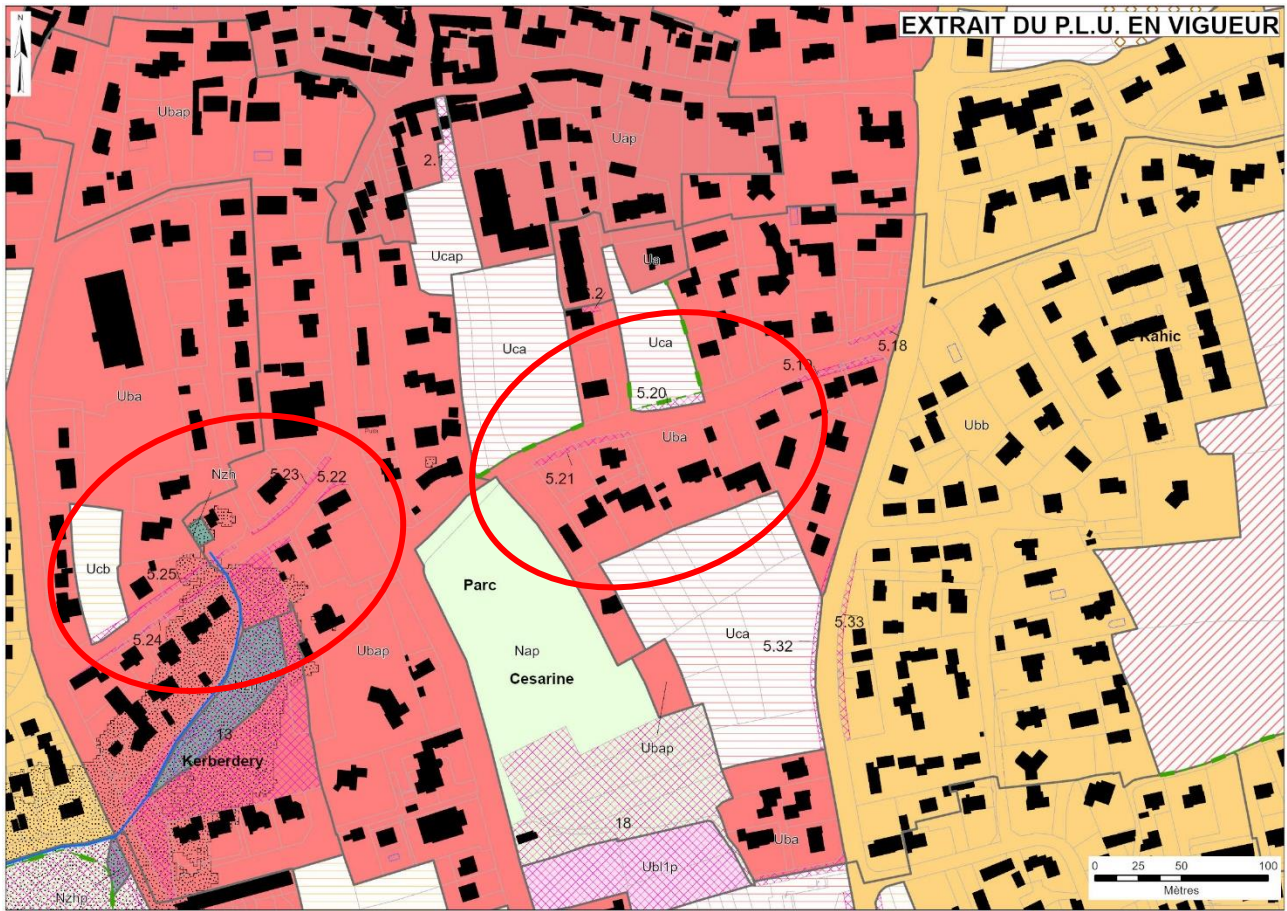


EXTRAIT DU P.L.U. MODIFIE

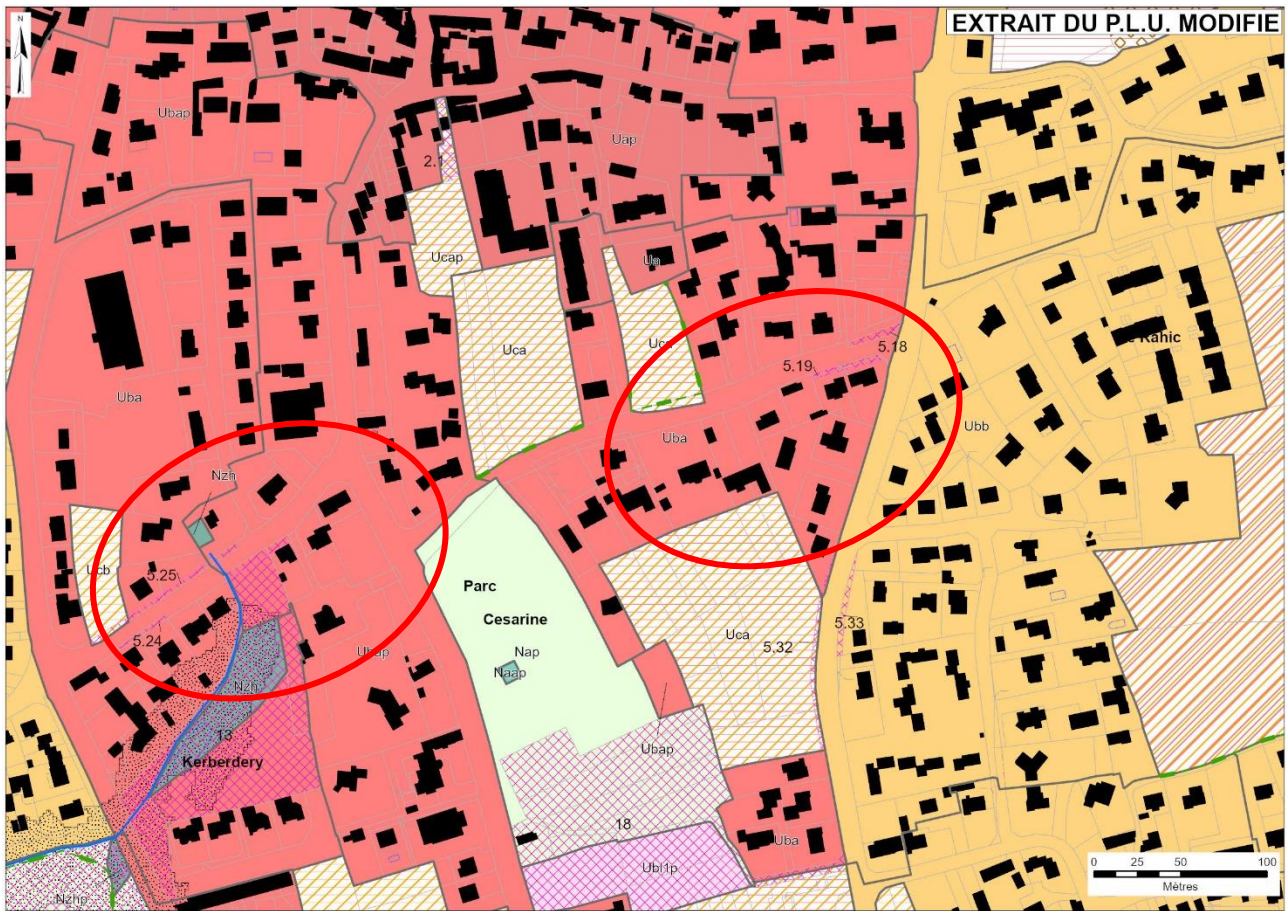


AVENUE DE ROER - ALIGNEMENTS

EXTRAIT DU P.L.U. EN VIGUEUR

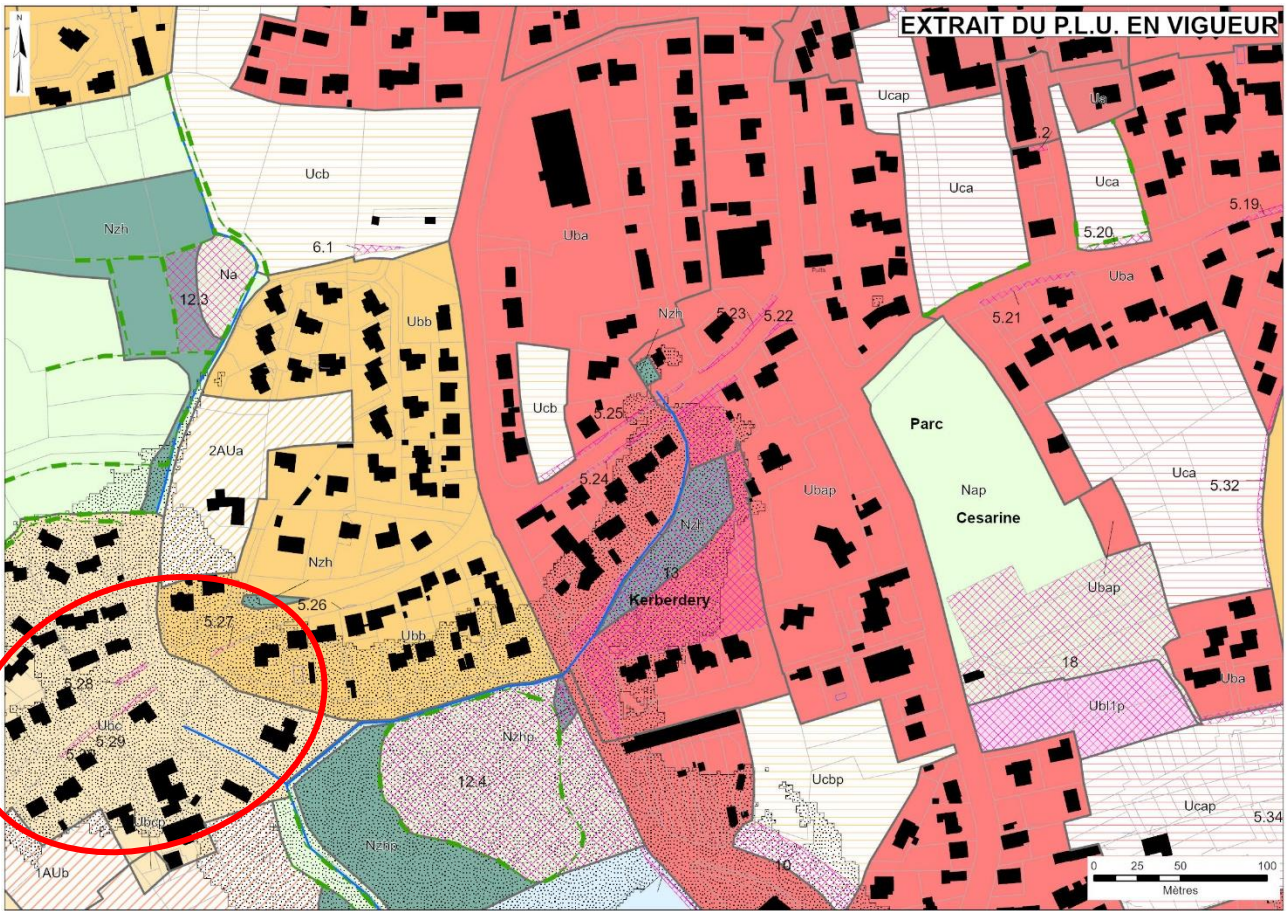


EXTRAIT DU P.L.U. MODIFIE

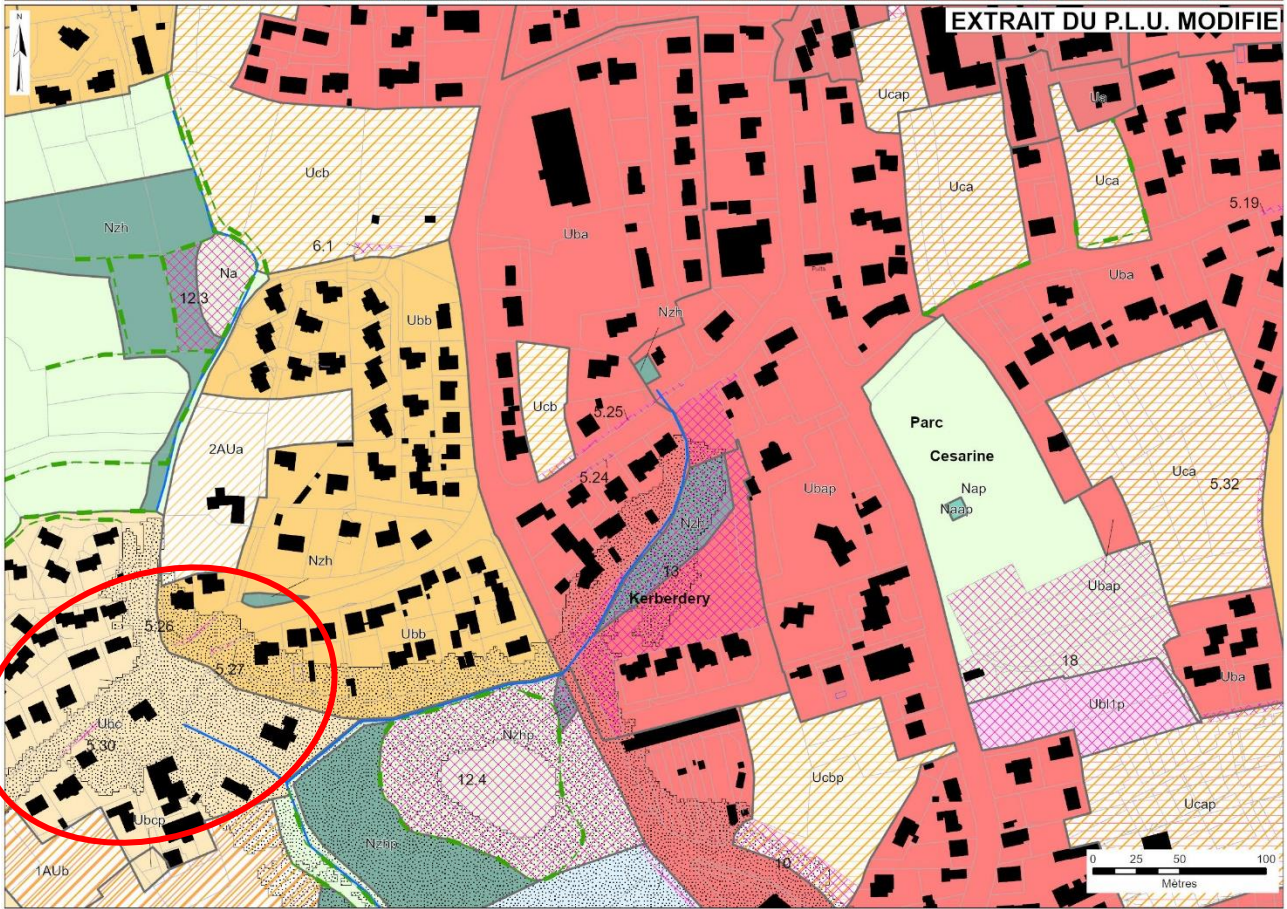


AVENUE SAINT COLOMBAN-ALIGNEMENTS

EXTRAIT DU P.L.U. EN VIGUEUR

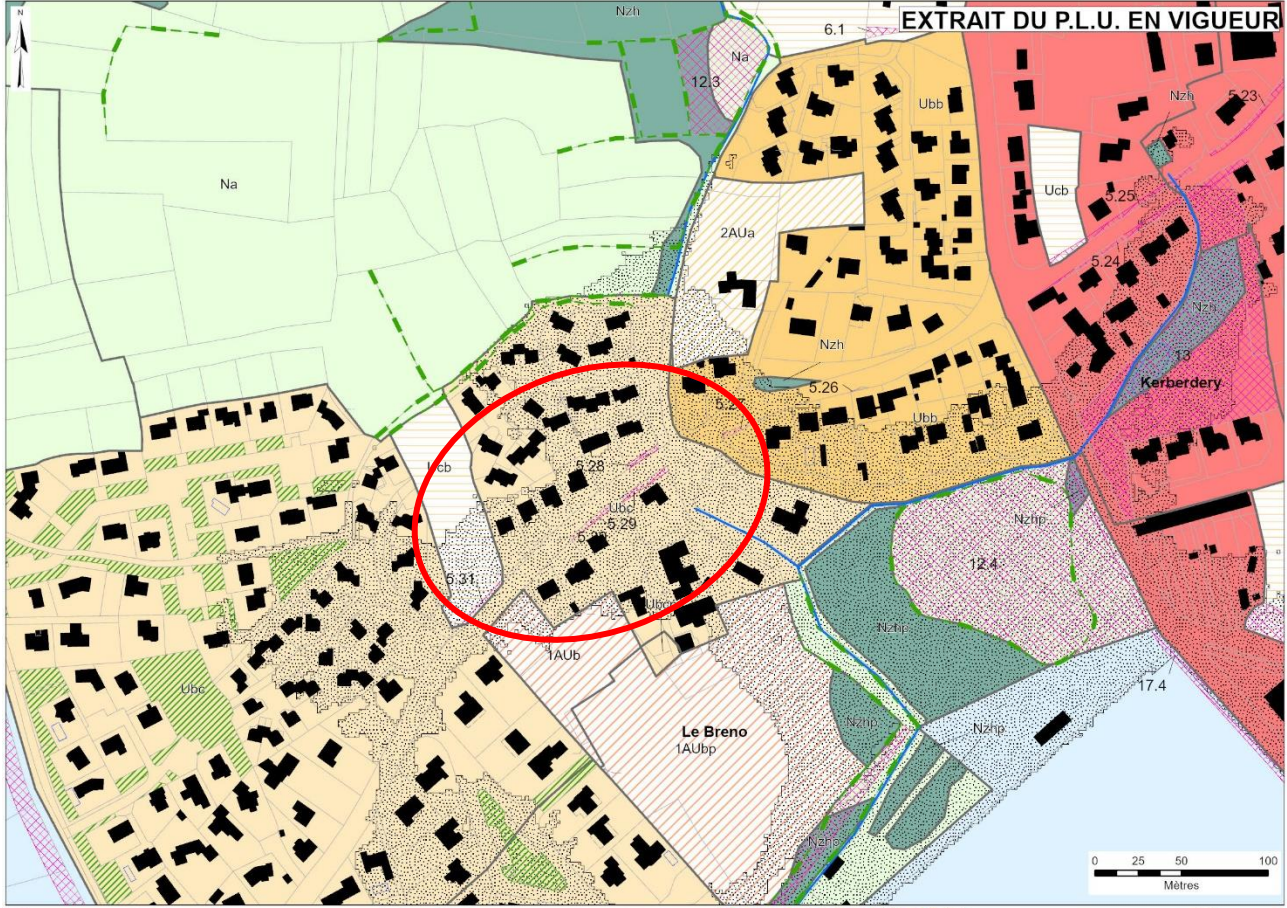


EXTRAIT DU P.L.U. MODIFIÉ

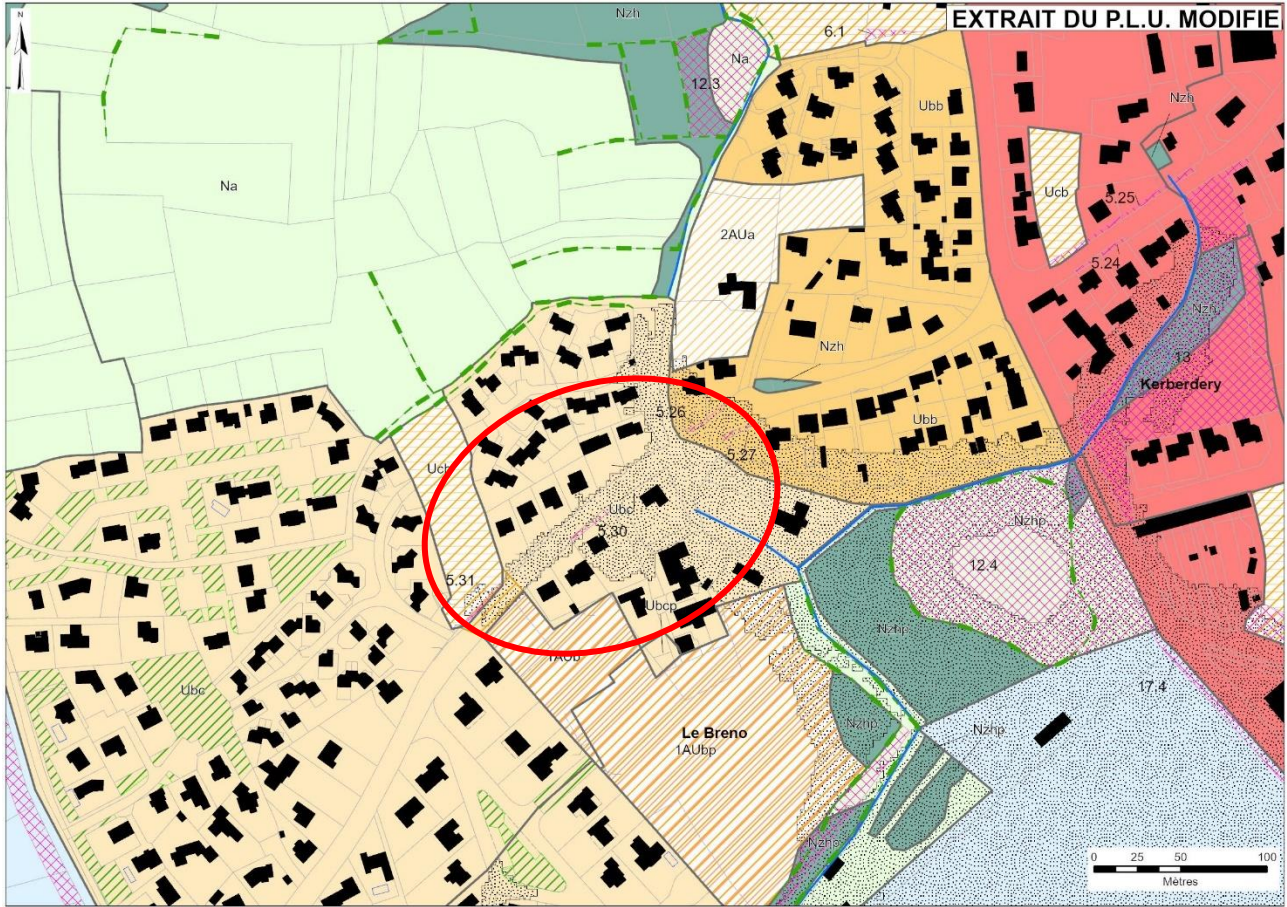


AVENUE SAINT COLOMBAN - ALIGNEMENTS

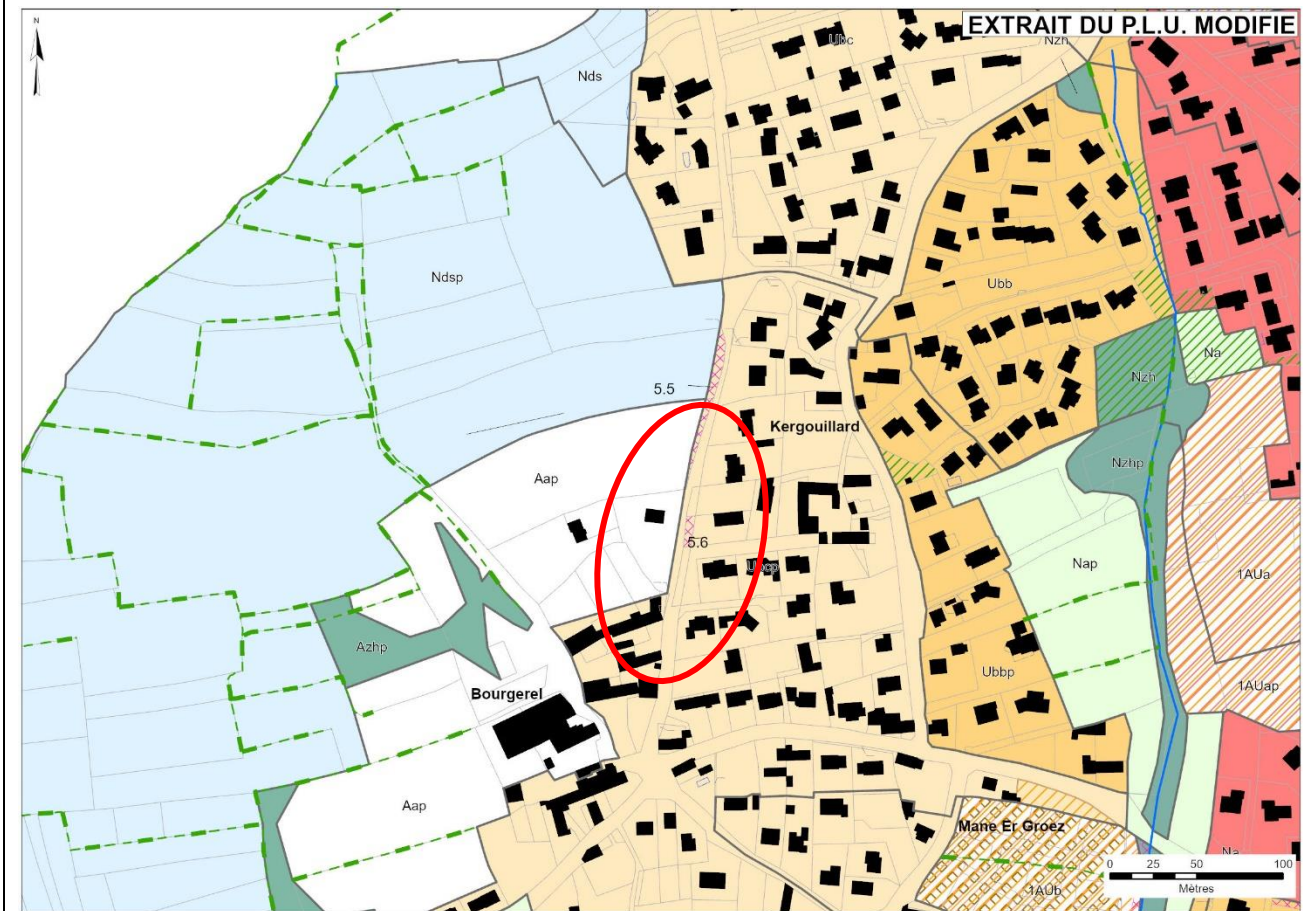
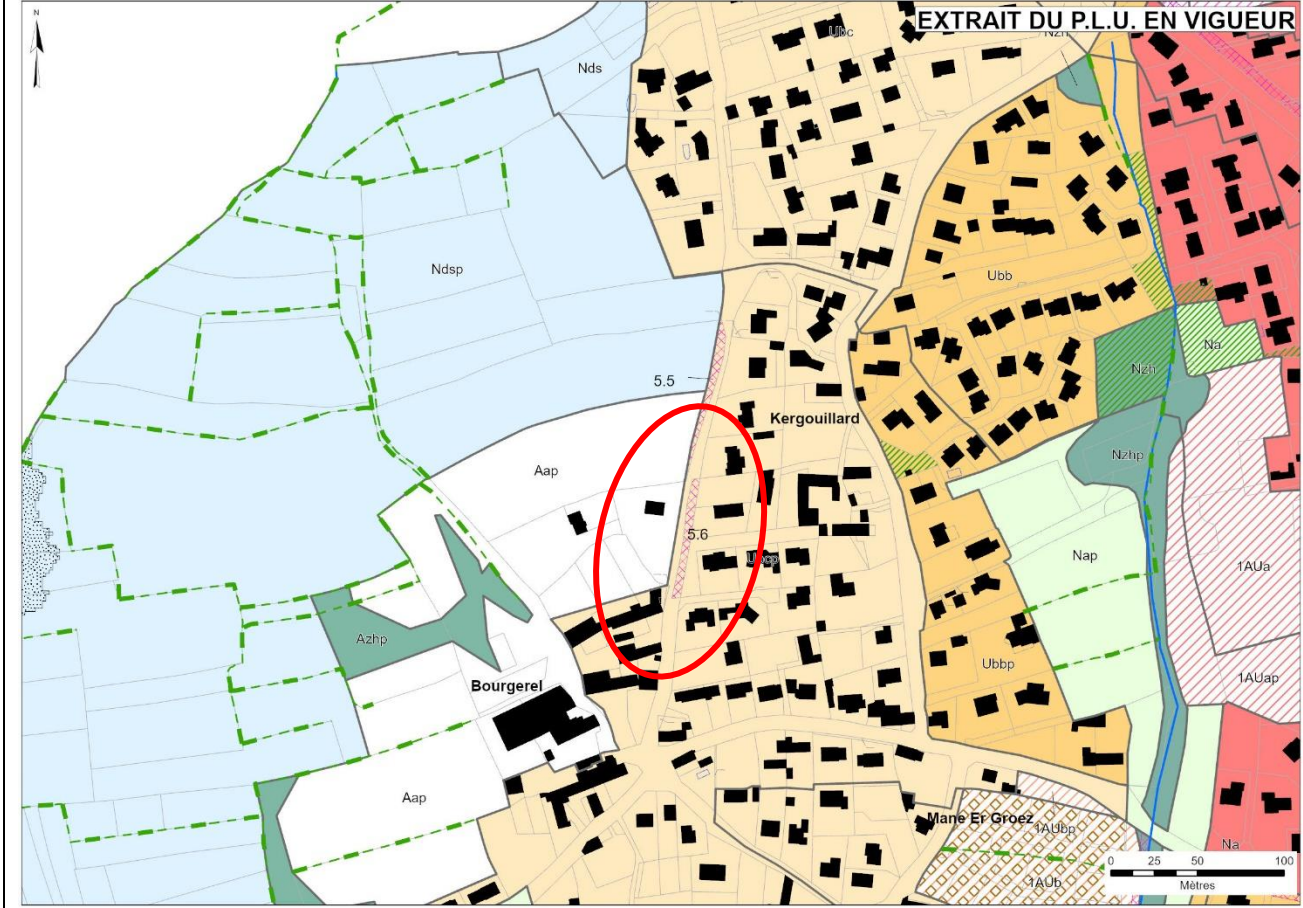
EXTRAIT DU P.L.U. EN VIGUEUR



EXTRAIT DU P.L.U. MODIFIE

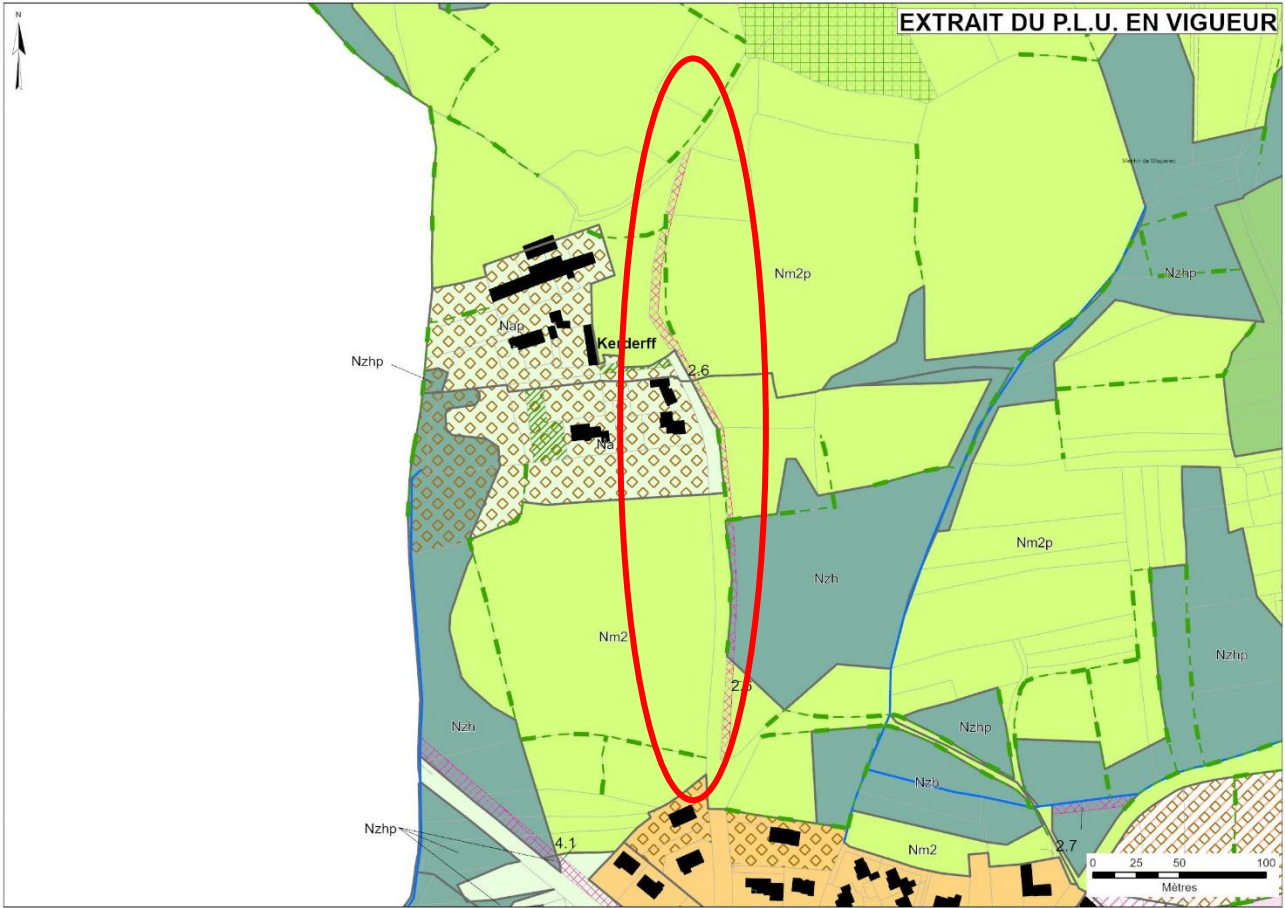


CHEMIN DES CAFFATS - ALIGNEMENT

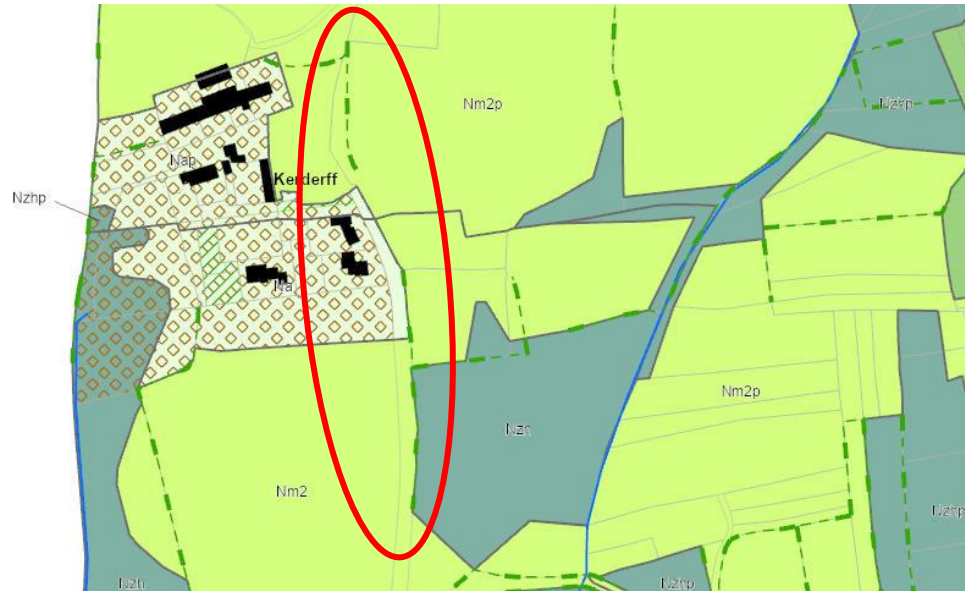


ER 2.6

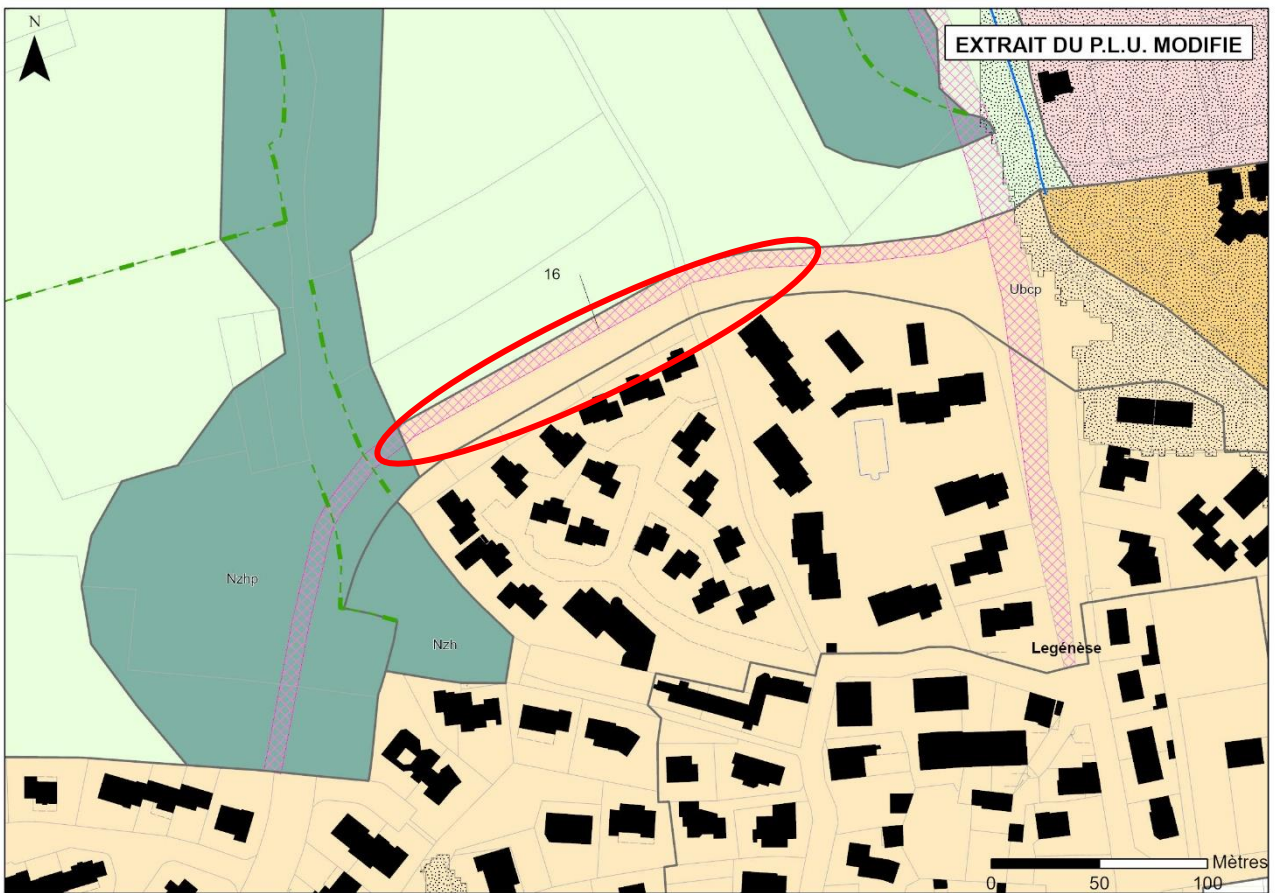
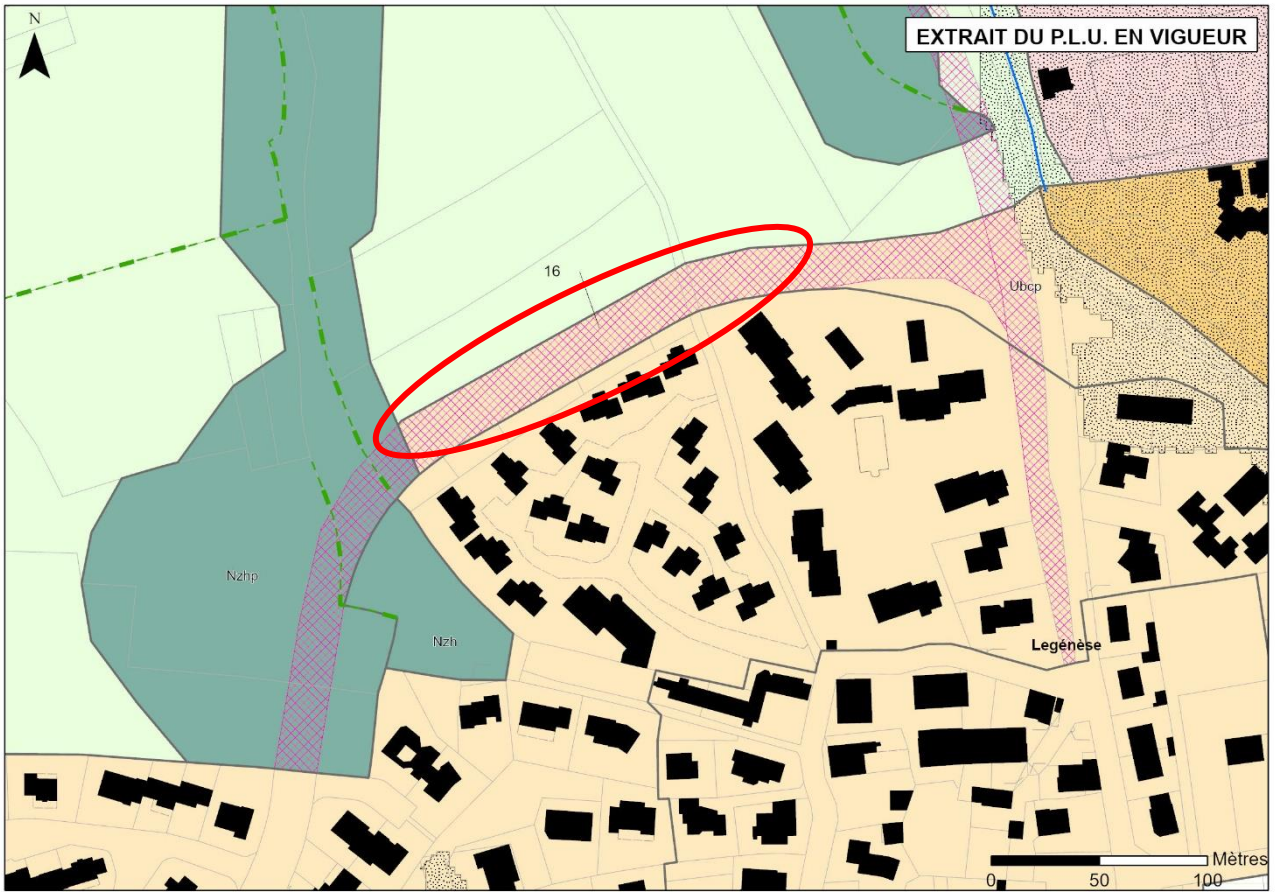
EXTRAIT DU P.L.U. EN VIGUEUR



EXTRAIT DU P.L.U. MODIFIE

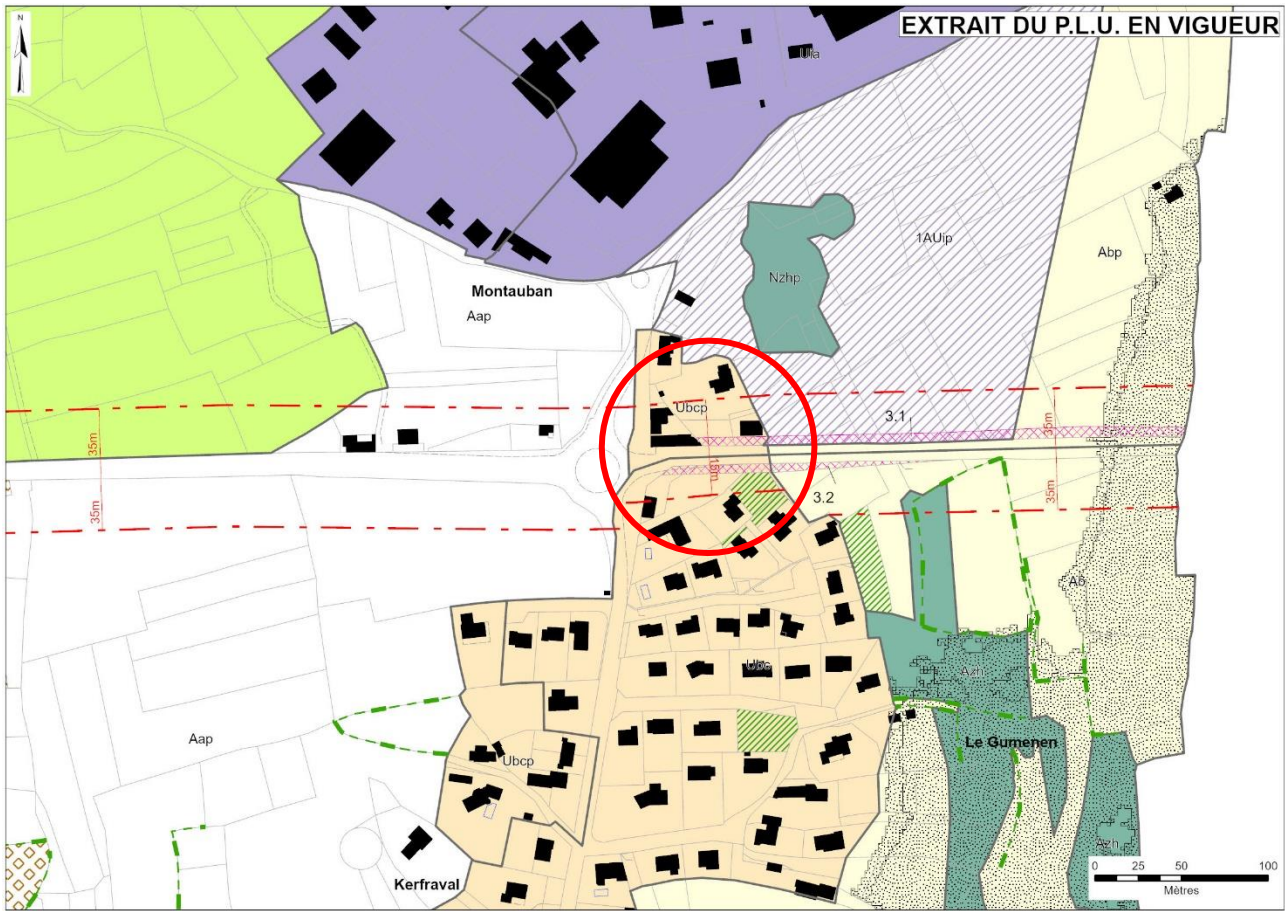


ER 16

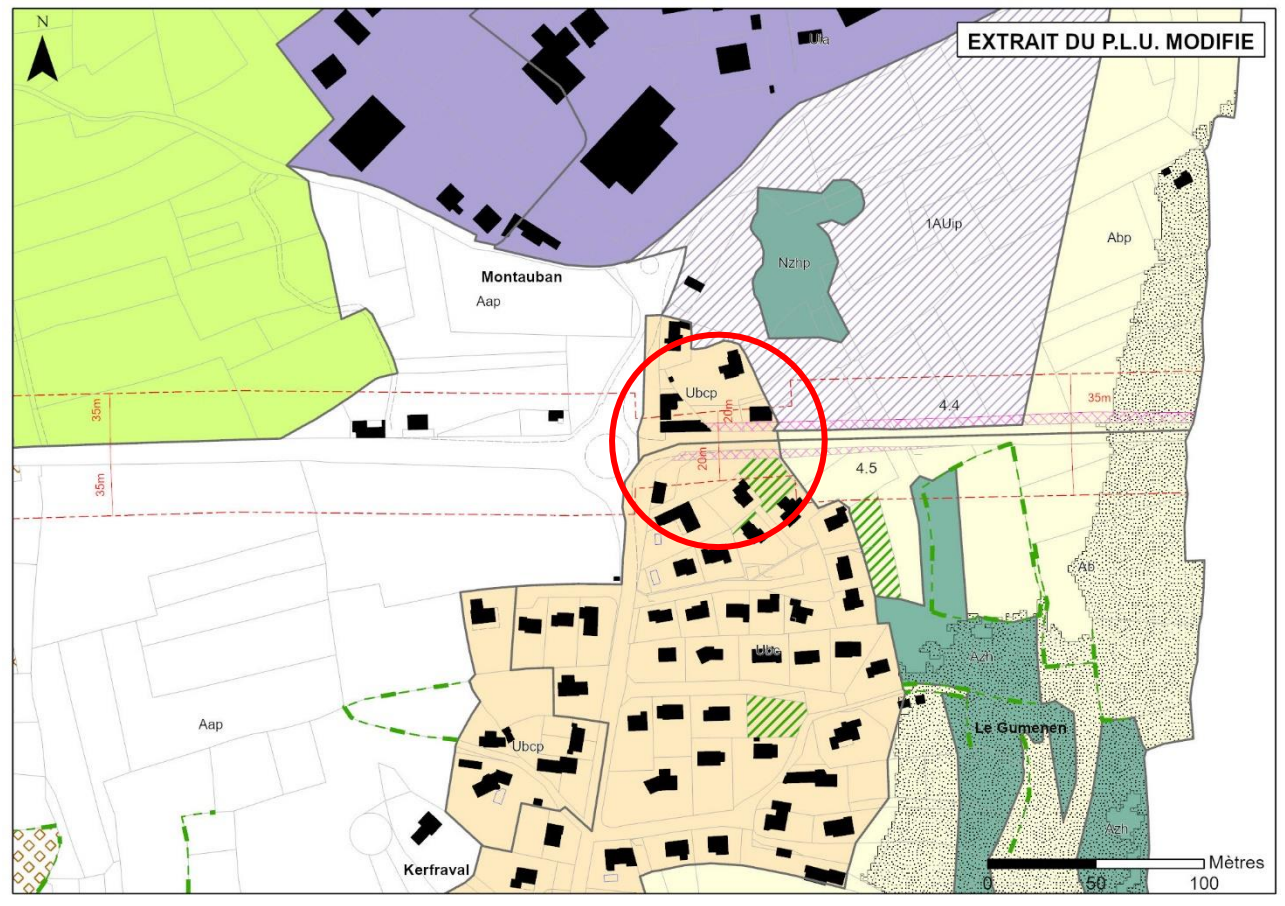


MARGE DE REcul RD781 MONTAUBAN ET RENUMÉROTATION DES EMPLACEMENTS RÉSERVÉS

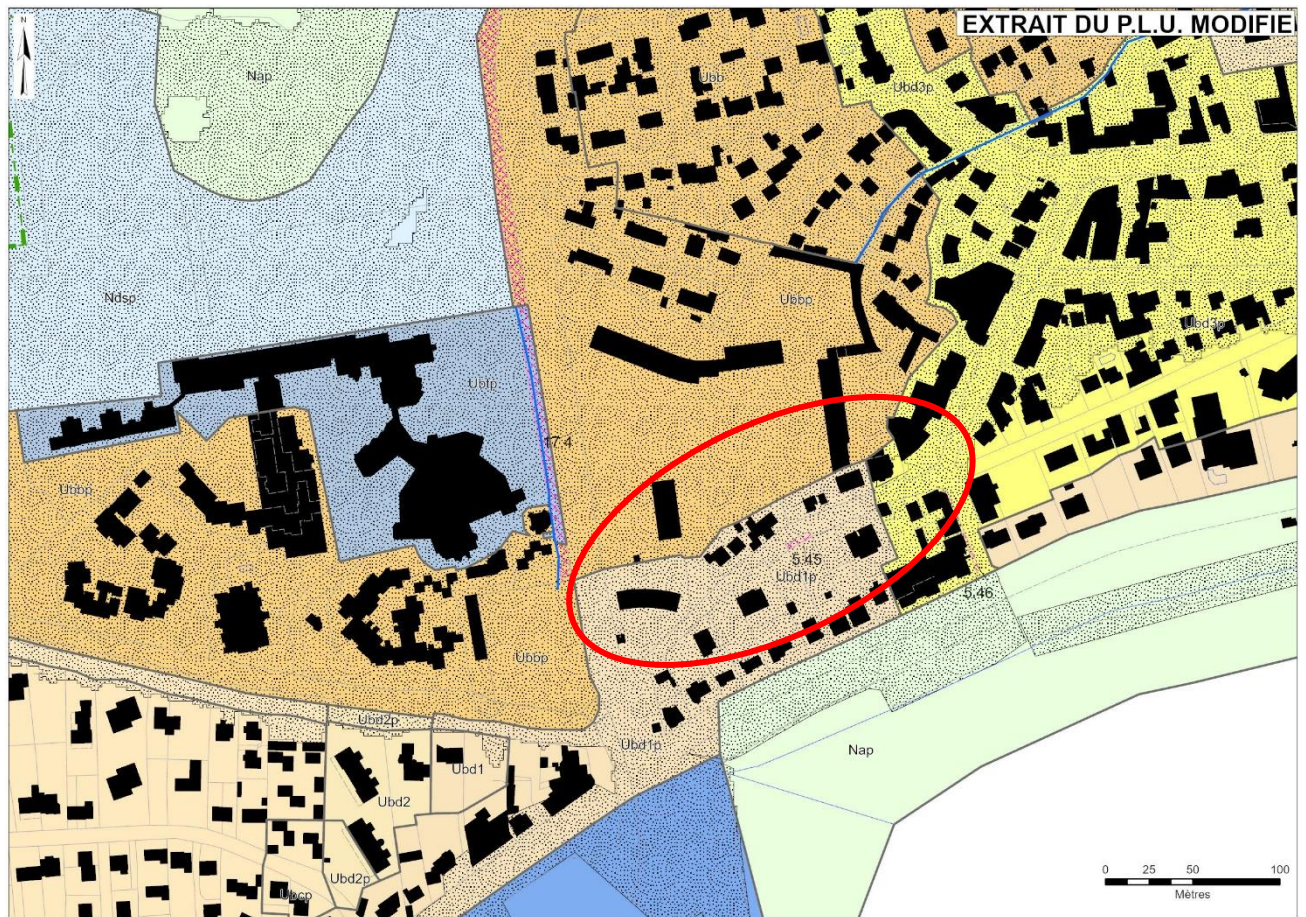
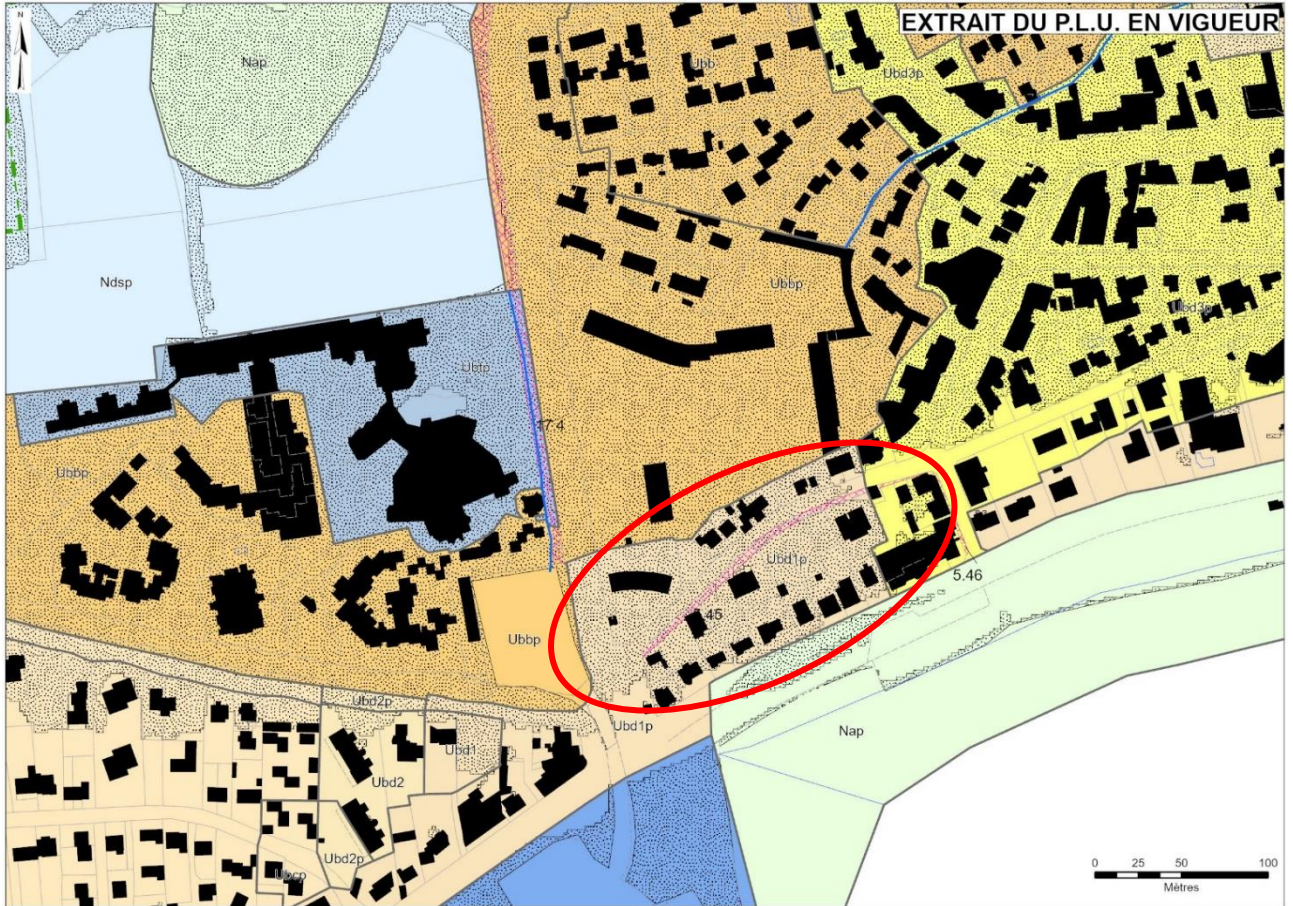
EXTRAIT DU P.L.U. EN VIGUEUR



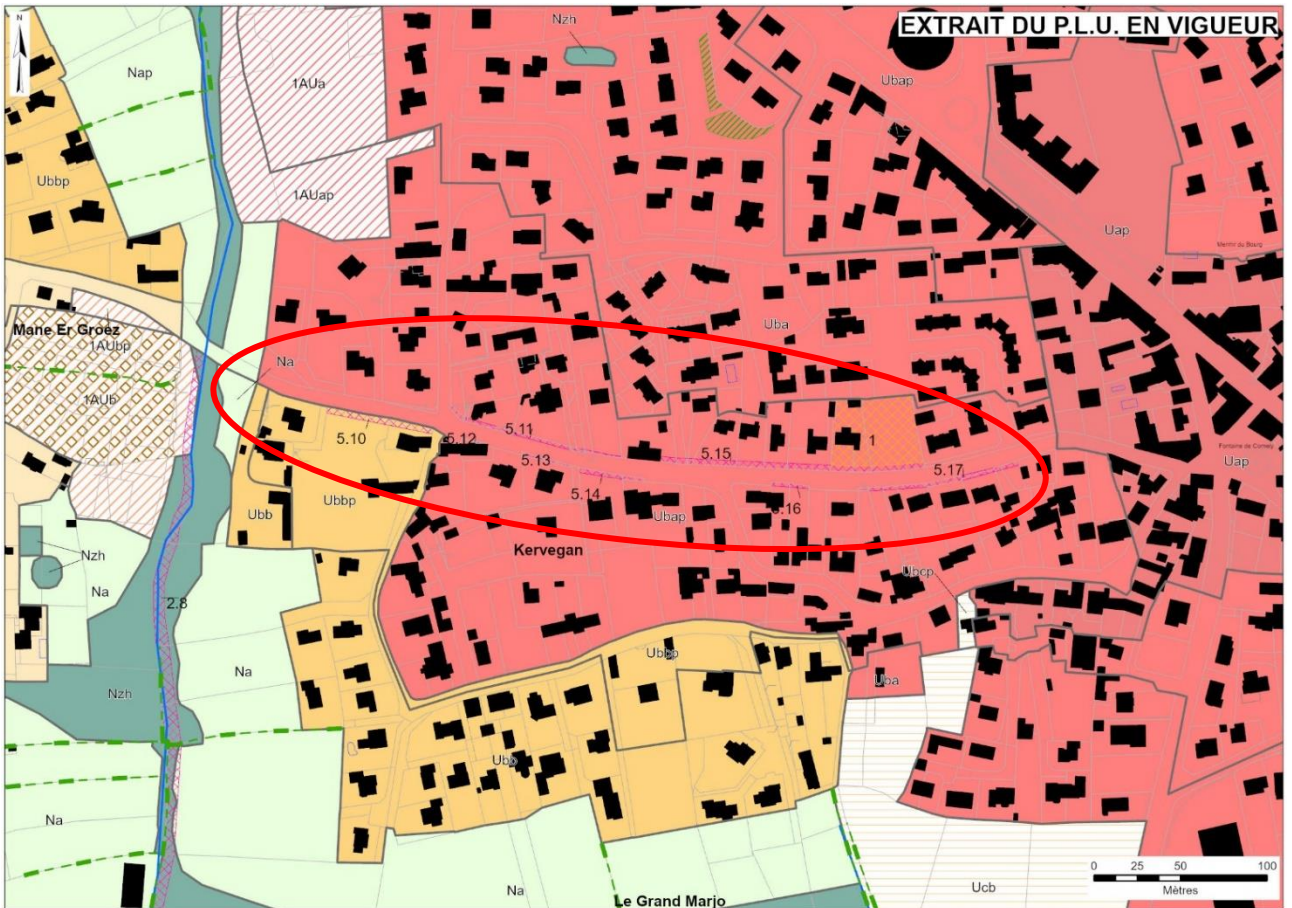
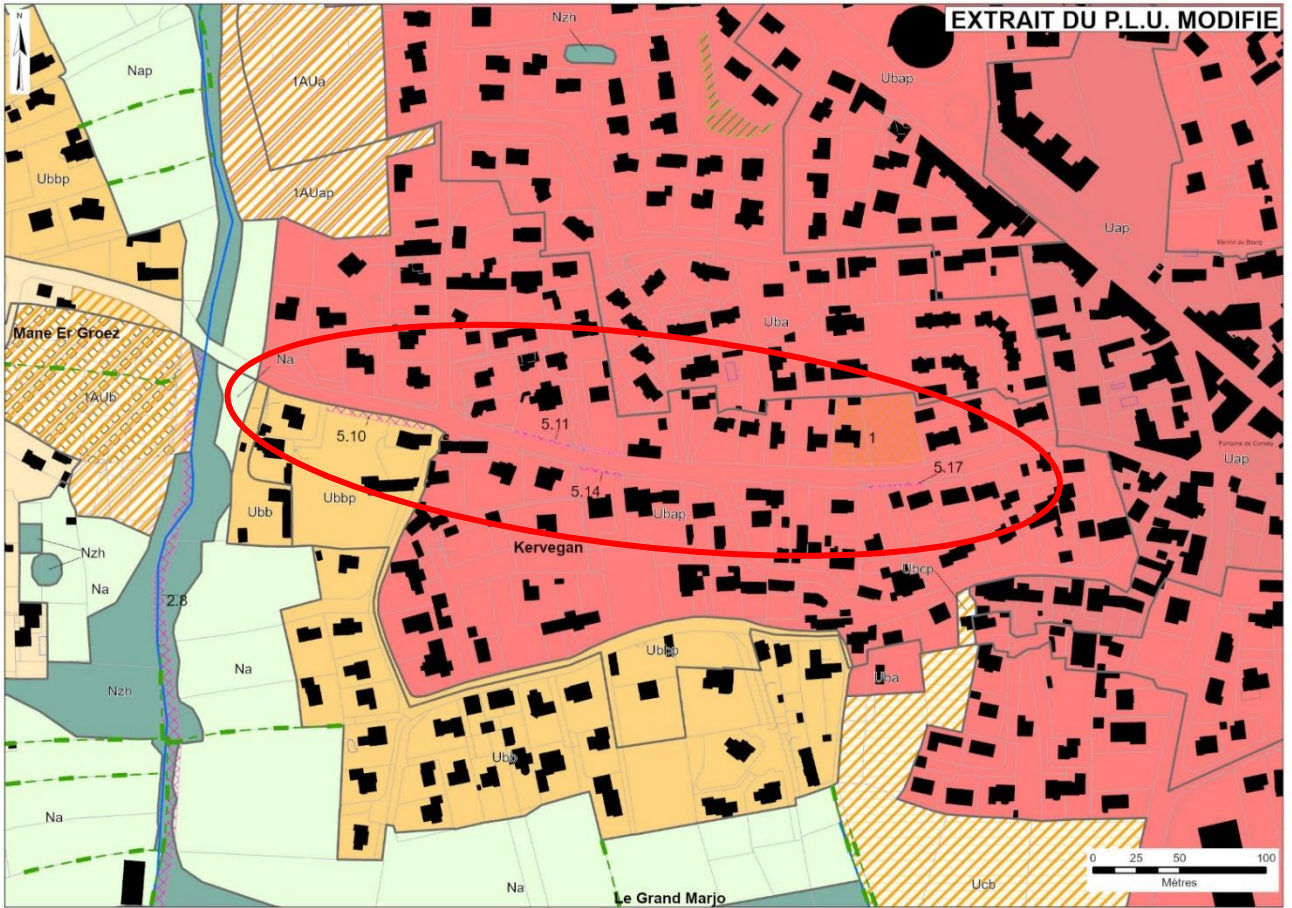
EXTRAIT DU P.L.U. MODIFIÉ



PORT – ALIGNEMENT



RUE DU PO- ALIGNEMENTS



RUE DU TUMULUS – ALIGNEMENTS – RECLS

